

*Visual Documentation
in
The Willard D. Straight Papers*

*Compiled by
Elaine D. Engst
Marcia J. Hopson*

*Department of Manuscripts and University Archives
Cornell University Libraries
Ithaca, New York
1981*

VISUAL DOCUMENTATION
IN
THE WILLARD D. STRAIGHT PAPERS

Compiled by:

Elaine D. Engst
Marcia J. Hopson

Department of Manuscripts and University Archives
Cornell University Libraries
Ithaca, NY
1981

TABLE OF CONTENTS

Preface	1
Chronology	2
Collection Organization	5
Description of Visual Material	6
Artwork, Certificates, Maps, and Textiles	9
Introduction to Indexes	14
Bibliography	17
Subject Index	
Box/Folder List	

PREFACE

The Willard D. Straight Papers document Straight's career through personal and official correspondence, reports, diaries, manuscript articles, photographs, scrapbooks, artwork, maps and textiles.

In 1974, selected personal letters, financial records, diplomatic and military papers were microfilmed and a guide, "The Willard Straight Papers at Cornell University" was published. In 1980 a computer-generated index was produced to provide folder-level access to the papers of both Willard D. Straight and Dorothy Whitney Straight Elmhirst. Those documents that were not microfilmed, including the papers of George C. Bennett and records of the Willard Straight Post of the American Legion, were listed in a typescript guide.

One of the valuable and unique aspects of the collection is that the historical documentation of the written material is supplemented by an extensive collection of photographs and artwork. The purpose of this guide is to provide optimum access to the photographs and artwork.

The project was assisted by the generous support and cooperation of the William C. Whitney Foundation and Michael W. Straight.

CHRONOLOGY

1880 Born January 31 in Oswego, N.Y. to Henry H. and Emma D. Straight

1886 Death of Henry H. Straight

1887 Accompanied family to Japan

1890 Death of Emma Straight, children returned to Oswego to live with family friends

1896-1897 Attended Bordentown Military Institute, Bordentown, N.J.

1897-1901 Attended Cornell University, majoring in architecture

Nov. 1901 Appointed to position with Chinese Imperial Maritime Customs Service

Jan.-July 1902 Studied at Chinese Imperial Maritime Customs Service College, Nanking, China

July 1902- Feb. 1904 Appointed personal secretary and assistant to Sir Robert Hart, Inspector General of Chinese Imperial Maritime Customs Service in Peking

July 1902 Illustrated Verse and Worse for J.O.P. Bland

Feb. 1904- Sept. 1905 Russo-Japanese War

Feb. 1904- June 1905 Reuters war correspondent

March 1904 Traveled to Japan

late June 1904 Traveled on Japanese steamer, Manshu Maru, with other western correspondents

July 1904 In Tokyo

Aug. 1904 In Korea

Sept.-Dec. 1904 In Japan

Jan. 1905 Fall of Port Arthur

Feb. 1905 Returned to China

June 1905 Appointed to post as Vice-Consul under Edwin V. Morgan in Seoul

Sept. 1905 Alice Roosevelt visit to Korea

Nov. 1905 American consulate in Seoul closed

Nov. 1905 Appointed Vice-Consul under Morgan in Havana, Cuba

June 1906 Appointed Consul-General at Mukden, Manchuria; traveled via Trans-Siberian Railroad to Mukden

Oct. 1906 Arrived in Mukden

March 1907 Obtained new building for Mukden consulate

Nov. 1907 Met William H. Taft in Vladivostok

May 1908 Manchuria trip with "Commander" Gillis: Mukden, Kuang-Chengtsu, Kirin, Hun-Chun, Ninguta, Harbin, Habarovsk, Aigun, Fakumen

1909 Illustrated Houseboat Days in China for J.O.P. Bland

June 1909 Appointed Peking representative of American Group

Nov. 1909 Funeral of Empress Dowager

Nov. 1909 Dorothy Whitney visit to Peking

April 30, 1910 Negotiated Chinese Currency Reform and Industrial Development Loan for American Group

Sept. 7, 1911 Married Dorothy Whitney in Geneva

Oct. 1911 Straights returned to Peking

Jan.-Feb. 1912 Straights traveled from Peking to Manila, Shanghai, Seoul, Mukden, and returned to Peking

Feb. 29, 1912 Straights forced to leave home during rebellion in Peking

Summer 1912 Straights left China permanently; loan negotiations in Europe concluded

1912-1913 Affiliated with J.P. Morgan after dissolution of American Group

1913 Elected president of American Asiatic Association

1914 New Republic founded

1914 Asia magazine founded

1915 Resigned from J.P. Morgan and Co.

Aug.-Sept.
1915 Participated in "Preparedness Movement" at Camp of Instruction, Plattsburg, N.Y.

Oct. 1915 Appointed third vice president of American International Corporation

Summer
1917 Enlisted in United States Army

Aug. 1917 Assigned as Assistant to the Adjutant, 35th Division, Camp Doniphan, Oklahoma

Oct. 1917 Assigned to organize overseas administration of War Risk Insurance Bureau

Dec. 1917 Sailed for Europe

Feb. 1918 Attended Army Staff College, Langres, France

1918 Some Men of East Asia published

Dec. 1,
1918 Died of pneumonia in Paris

COLLECTION ORGANIZATION

Visual material described in this guide constitutes subgroup 3 of the Willard D. Straight Papers.

SUBGROUP III.	Visual Material	<u>Boxes</u>	<u>Map Case Drawers</u>
Series I.	Photographs		
	subseries 1. Albums	50-61	
	subseries 2. Prints	62-67, 75	
	subseries 3. Negatives	68-71	
	subseries 4. Postcards and Views	72-74	
Series II.	Artwork by Willard Straight	79, 80	1, 2
Series III.	Collected Artwork		
	subseries 1. Western	76-78	3
	subseries 2. East Asian		4,5
Series IV.	Certificates		6
Series V.	Maps		6
Series VI.	Textiles		7, 8

DESCRIPTION OF VISUAL MATERIAL

Visual material in the Willard D. Straight Papers includes a variety of art and media forms. Series I contains photographs, albums, negatives, postcards, and commercial views. Series II contains published and unpublished watercolors; pen, pencil, and crayon sketches; and charcoals by Willard Straight. Series III contains artwork that was collected by Willard and Dorothy Whitney Straight. Series IV contains certificates presented to Willard Straight and Series V contains maps.

Earliest photographs in the collection include professional photographs of Straight family members and friends. After the death of Willard Straight's father in 1886, Emma Straight accepted an invitation to teach English at the Girls' Normal School in Tokyo, Japan. Here Willard sketched people and scenes that interested him and studied drawing with a Japanese master. The collection includes a small sketchbook from these lessons. After his mother's death in 1890, he was sent to live with family friends in Oswego, New York, where he continued drawing and painting. Watercolors, maps, and greeting cards from this period are included.

After graduating from Bordentown Military Academy, Straight studied architecture at Cornell University. The collection contains student work including architectural drawings, watercolors, and life drawings as well as published and unpublished sketches for the Widow and the Cornellian, two student publications. There is also a calendar with caricatures of notable Cornell figures of the time and a booklet of humorous verse, "Kornell Krinkles," illustrated by Straight. Straight's Cornell scrapbooks contain photographs and memorabilia.

Willard Straight was appointed to the Chinese Imperial Maritime Customs Service after graduating from Cornell. From 1901 until 1912 he spent most of his time in the Far East. His fascination with China, Korea, and Japan is documented by extensive diaries and numerous sketches and photographs. In 1902 he wrote, "as for the life, I like it better all the time. It's full of interest and color and there is

no end of chances for sketching, sketching, sketching." In his first months at Nanking, he illustrated a humorous volume by J.O.P. Bland, Verse and Worse. A copy of that work and a number of the original sketches are included in the collection. There are also many small sketches and studies of Chinese people and scenes from this period, as well as portraits of friends and associates. Some of these sketches were used as illustrations for the biographies of Willard Straight by Herbert Croly and by Louis Graves. Other sketches were published by Asia Publishing Company in 1918 under the title, Some Men of East Asia.

When the Russo-Japanese War began in February 1904, Straight joined Reuters as a war correspondent. Throughout the war he sketched Japanese and Russian soldiers and officers, Korean people, and other war correspondents. Many of the sketches were intended to illustrate articles. Photographs depict people and events of the war, including the sinking of the Russian fleet and the battle of Mukden.

As Vice-Consul at Seoul under Edwin V. Morgan, Straight continued to sketch Korean people. A major event of this period, the visit of Alice Roosevelt to Seoul is depicted in a group of photographs. With the closing of the legation in Seoul, Straight accompanied Morgan as his Vice-Consul in Cuba. There are no sketches from this period and only a few photographs.

In June, 1906, Theodore Roosevelt appointed Straight Consul-General to Mukden, Manchuria. As Straight became more involved with diplomatic work, he had less time for sketching and photographs became more important for documenting people and events. There are numerous photographs of diplomats, social acquaintances, and events. A major group of photographs, taken in May 1908, documents a trip through Manchuria with Commander Gillis. The State Department authorized the trip as a means to explore agricultural and commercial possibilities; because of potential dangers, the Manchurian administration provided official credentials and a military escort. The only group of sketches from this period was done to illustrate Houseboat Days in China by J.O.P. Bland, published in 1909.

In June 1909, Straight was appointed Peking representative of the

American Group, a consortium of bankers promoting American participation in Chinese investment. Photographs from this period include views of Peking landmarks; events, including the funeral of the Empress Dowager; and people, including Dorothy Whitney.

Through 1910 and 1911 Straight was deeply involved in various loan negotiations. Following the conclusion of these negotiations, he traveled in Europe with Dorothy Whitney. The collection includes sketches done that summer in Brittany. After their marriage the Straights returned to China. Sketches and photographs depict their house and friends in Peking. Many photographs were taken on a trip to Manila, Shanghai, Seoul, and Mukden in early 1912. In February 1912, rebellion broke out in Peking. Numerous photographs document the disturbances and destruction of the city and the Straights' home. During the summer of 1912 the Straights left China permanently.

From late 1912 through 1915 Straight continued to encourage American foreign interests through his work with J.P. Morgan and Company, the American Asiatic Association, and India House. He helped found two magazines in 1914: Asia, and The New Republic. Many photographs and sketches from this period include the Straight children, Whitney, Beatrice, and Michael.

Photographs and an album document Straight's participation in the U.S. Army Camp of Instruction in Plattsburgh, New York in 1915. In 1917, Straight enlisted in the United States Army and in October was assigned to organize the overseas administration of the War Risk Insurance Bureau. He sailed for Europe in December and by February had accomplished his task. Reassigned, he attended Army Staff College in Langres. The collection includes photographs, sketches, and maps from this period and a series of watercolors done while in Normandy on leave in August. On December 1, 1918 Willard Straight died of pneumonia in Paris.

ARTWORK, CERTIFICATES, MAPS, AND TEXTILES

SERIES II. Artwork by Willard Straight, *K map cases U-16 through 3-01*

K map case *U-16 = drawer 1*

<u>drawer-folder</u>	<u>description</u>	<u>items</u>
1-1	Childhood drawings	
	a. watercolors, n.d.	1-3
	b. watercolors and watercolor greeting cards, 1892, 1895, n.d.	4-9
	c. watercolors (ships), 1894-1895	10-17
	d. watercolors (portraits), 1894, n.d.	18-20
	e. pencil and charcoal sketches, n.d.	21-22
	f. watercolor and ink, 1892, n.d.	23-27
	g. watercolor maps and cards, 1891, n.d.	28-32
	h. pencil, watercolors, 1890, 1892, 1895	33-38
	i. Bordentown charcoals, 1896	39-41
1-2	Student drawings, Cornell (published and unpublished)	
	a. pencil, conte crayon sketches	42-48
	b. calendar with watercolors	49-52
	c. originals for Cornell <u>Widow</u> and <u>Cornellian</u> , 1900, 1901	53-60
	d. pencil and watercolor drawings	61-63
	e. watercolors	64-67
	f. watercolors	68-71
1-3	Sketches and charcoals, Cornell	72-84
1-4	Sketches and charcoals, Cornell	85-97
1-5	Watercolor architectural drawings, Cornell	98-109
1-6	Architectural drawings, Cornell, plans for Tanner house	110-117
2-1	Oversize architectural watercolors, Cornell	118-122
2-2	Pencil, watercolor, crayon, charcoal sketches, China	
	a. pencil, watercolor, crayon	123-126
	b. pencil sketches, studies, scenes and people	127-132
	c. pencil sketches, scenes and people	133-139
	d. charcoal, pencil and watercolor portraits	140-142
	e. Russo-Japanese war pencil sketches, annotated	143-151
	f. pencil sketches, scenes, Russo-Japanese war, annotated	152-157

K-map case
U-17 =
drawer
2

map case drawer-folder	description	items
2-3	Sketches and watercolors, China and France a. pencil sketches, China b. watercolors c. pencil and chalk sketches, Brittany, 1911 d. pencil sketches of Dorothy and Whitney e. watercolor placecards, China f. pencil sketches, Paris, 1912-1918 g. watercolors, Villerville, 1918 h. watercolors	158-165 166-168 169-173 174-175, 304 176-185 186-191 192-193 194-195
2-4	Chinese pencil, ink, and crayon sketches a. chalk and ink sketches, China b. pencil sketches, China c. pencil sketches, China d. pencil, ink, and crayon portraits, China e. pencil sketches, China f. pencil and ink sketches, China	196-197 198-202 203-207 208-214 215-219 220-225
2-5	Original sketches used in publications a. <u>Verse and Worse</u> sketches, pages 1-101, originals b. <u>Verse and Worse</u> sketches, pages 106-end, originals c. <u>Some Men of East Asia</u> sketches, 2 originals 4 reproductions (mounted)	226-232 233-240 241-243
4-3	Reproductions of sketches from <u>Some Men of East Asia</u> , mounted and framed	
2-6	a. portraits from Croly b. Croly illustrations to page 137, China, Korea, Japan c. Croly illustrations page 144-192, China, Korea, Japan d. Croly illustrations page 260-end, China, Korea, Japan	244-252 253-267 268-278 279-281
2-7	a. Croly illustrations, Brittany, 1911 b. Croly illustrations, Normandy, 1918 c. Graves illustrations (not included in Croly) d. Graves illustrations (not included in Croly)	282-285 286-289 290-296 297-303
<u>Box</u> 79	sketchbook #15: watercolors <u>c.</u> 1888 sketchbook #5: pencil, n.d. sketchbook #2: pencil and watercolor <u>c.</u> 1905 (sketches of Koreans) sketchbook #1: pencil <u>c.</u> 1890-1905 sketchbook #3: pencil and watercolor <u>c.</u> 1905-1915 sketchbook #4: pencil <u>c.</u> 1905 sketchbook #13: pencil <u>c.</u> 1894	

Box 80

description

folio: Laura R. Newkirk Her Book-- contains printed published sketches from the Cornell Widow and the Cornellian

scrapbook: mounted printed illustrations from Willard Straight in the Orient by Louis Graves

sketchbook #20: pencil sketches and tracing from architecture class at Cornell

sketchbook #14: watercolors and pencil drawings c. 1891

sketchbook #18: watercolors and pencil drawings c. 1891-1901

sketchbook #11: pencil drawings c. 1900

sketchbook #6: pencil sketches, China n.d.

sketchbook #8: pencil sketches, China c. 1903

sketchbook #10: pencil sketches n.d.

sketchbook #7: pencil sketches c. 1909

sketchbook #17: watercolor, ink, and pencil drawings c. 1896-1899

sketchbook #9: pencil sketches c. 1902

printer's block for bookplate

printer's plate photo of Willard Straight

glass negatives and lantern slides by Straight children

folder: calendar with portraits of well-known Cornell men, 1901

folder: Ex Libris bookplates, sketches, photos and article "Kornell Krinkles"

SERIES III, Subseries 1. Collected Artwork, Western

map case

drawer-folder

description

- 3-1
 - a. tracings by Timothy Cole
 - b. portrait of Abraham Lincoln, tracing
- 3-2
 - a. French cartoons
 - b. French etchings and cartoon c. 1915
 - c. lithograph of West Front of Winchester Cathedral
- 3-3
 - a. etching by Ruth Sypherd Clements
 - b. English prints of Chinese subjects
 - c. two watercolors by Ellis
 - d. three watercolors by Helene Schulze
- 3-4
 - SIX AMERICAN ETCHINGS, published by the New Republic, 1924
- 3-5
 - ink drawing of Willard Straight Hall c. 1925

SERIES III, Subseries 2. Collected Artwork, East Asian

map case

drawer-folder

description

- 4-1 a. Japanese print of ceremony
b. Chinese cartoon
c. mounted photograph and poem by George Marvin
d. painting of Chinese mandarin
e. cloth collage
- 4-2 prints of scenes from suppression of Formosan Rebellion
- 5-1 twenty Tibetan paintings
- 5-2 Chinese manuscript
- 5-3 dry points by Nikolaki
- 5-4 two prayer mats
- 5-5 three cloth Japanese dolls
- box 76 two foldout books on archery (Chinese)
- 77 two Chinese books: scenes of country life
wood block with painting
painting on glass
- 78 "Selections from Hokusai's Views of Mount Fuji," reproduced
by T. Hasegawa, Tokyo
"Collection II Masterpieces by Hiroshige," reproduced by T.
Hasegawa, Tokyo
four "comic books" on Russo-Japanese War:
"How to Destroy Russia" "How to Kill Russia"
"How to Kill Eagle" "Sarukani kassen" (folk tale)
seven parchment books: patterns and fabric designs for kimonos

SERIES IV. Certificates

map case

drawer-folder

description

- 6-1 "30 Count Certificate," Oswego High School, 1895
Bordentown Appointment as corporal, 1896
Bordentown diploma, 1897
Cornell diploma, 1901
Certificate of designation as New York State's delegate to
Second National Conference of Currency Reform, 1913
Tribute by Columbia University, 1919
Memorial certificate from Republic of France, 1919

SERIES V. Maps

<u>map case</u> <u>drawer-folder</u>	<u>description</u>
6-2	Russo-Japanese War maps, Japan and Battle of Mukden, <u>c.</u> 1905
6-3	Russo-Japanese War maps, in Russian, <u>c.</u> 1905
6-4	maps of Manchuria in Chinese, three envelopes, n.d.
6-5	Sung-Hua River map, n.d.
6-6	China map, 1909
6-7	blueprint map: "sketch-plan of battlefields and surrounding districts Wuchang, Hanyang, and Hankow" c. 1912
6-8	Army Training maps, two from Plattsburgh, 1915; one from Langres, 1918
6-9, 10	road maps of France, <u>c.</u> 1916

SERIES VI. Textiles

7-1	silk with woven pattern of Chinese children
7-2	Indian woven textile, cotton
7-3	Indian woven textile, silk
7-4	two American flags, 46 star and 44 star
7-5	two signal flags
8	two large red Chinese silks with characters and figures attached, given as gifts of appreciation to Willard and Dorothy Straight.

Willard D. Straight Papers. Supplement.

<u>Box #</u>	<u>Folder #</u>	<u>Description</u>
86	1-29	Modern prints of nitrate negatives in Box 71. See "Visual Documentation in the Willard D. Straight Papers" for folder titles
87		Contact negatives of nitrate negatives in Box 71

Negatives and prints were produced by Photoservices, 1983-1984.

BIBLIOGRAPHY

- Biggerstaff, Knight. China: Revolutionary Changes in an Ancient Civilization. Ithaca, NY: Cornell University Press, 1945.
- Biggerstaff, Knight. The Far East and the United States. Ithaca, NY: Cornell University Press, 1943.
- Bland, John Otway Percy. Recent Events and Present Policies in China. Philadelphia: J. B. Lippincott Company, 1912.
- Clubb, Oliver Edmund. China and Russia; the "Great Game". New York: Columbia University Press, 1971.
- Clubb, Oliver Edmund. 20th Century China. New York: Columbia University Press, 1964.
- Croly, Herbert David. Willard Straight. New York: MacMillan, 1924. *
- Encyclopedia Britannica, eleventh edition. Cambridge, England, 1910.
- Eskind, Andrew H. and Barsel, Deborah. "I.M.P. at George Eastman House Conventions for Cataloguing Photographs." Image, vol. 21, no. 4, pp. 1-31. Rochester, NY: International Museum of Photography at George Eastman House, 1978.
- Goodrich, L. Carrington and Cameron, Nigel. The Face of China: As Seen by Photographers and Travelers 1860-1930. Millerton, NY: Aperture, 1978.
- Graves, Louis. Willard Straight in the Orient. New York: Asia Publishing Company, 1922. *
- Haller, Margaret. Collecting Old Photographs. New York: Arco Publishing Company, 1978.
- Hsu, Immanuel C. Y. The Rise of Modern China. New York: Oxford University Press, 1970.
- Kahn, Helen Dodson. The Great Game of Empire: Willard D. Straight and American Far Eastern Policy. Cornell University Ph.D. thesis, 1968 *
- Scheiber, Harry N. "World War I as Entrepreneurial Opportunity: Willard Straight and the American International Corporation." Political Science Quarterly LXXXIV (September 1969), pp. 487-511. New York: Faculty of Political Science of Columbia University.
- * Major references for identification of photographs and artwork were: Willard Straight by Herbert Croly, Willard Straight in the Orient by Louis Graves, and The Great Game of Empire: Willard D. Straight and American Far Eastern Policy by Helen Kahn.

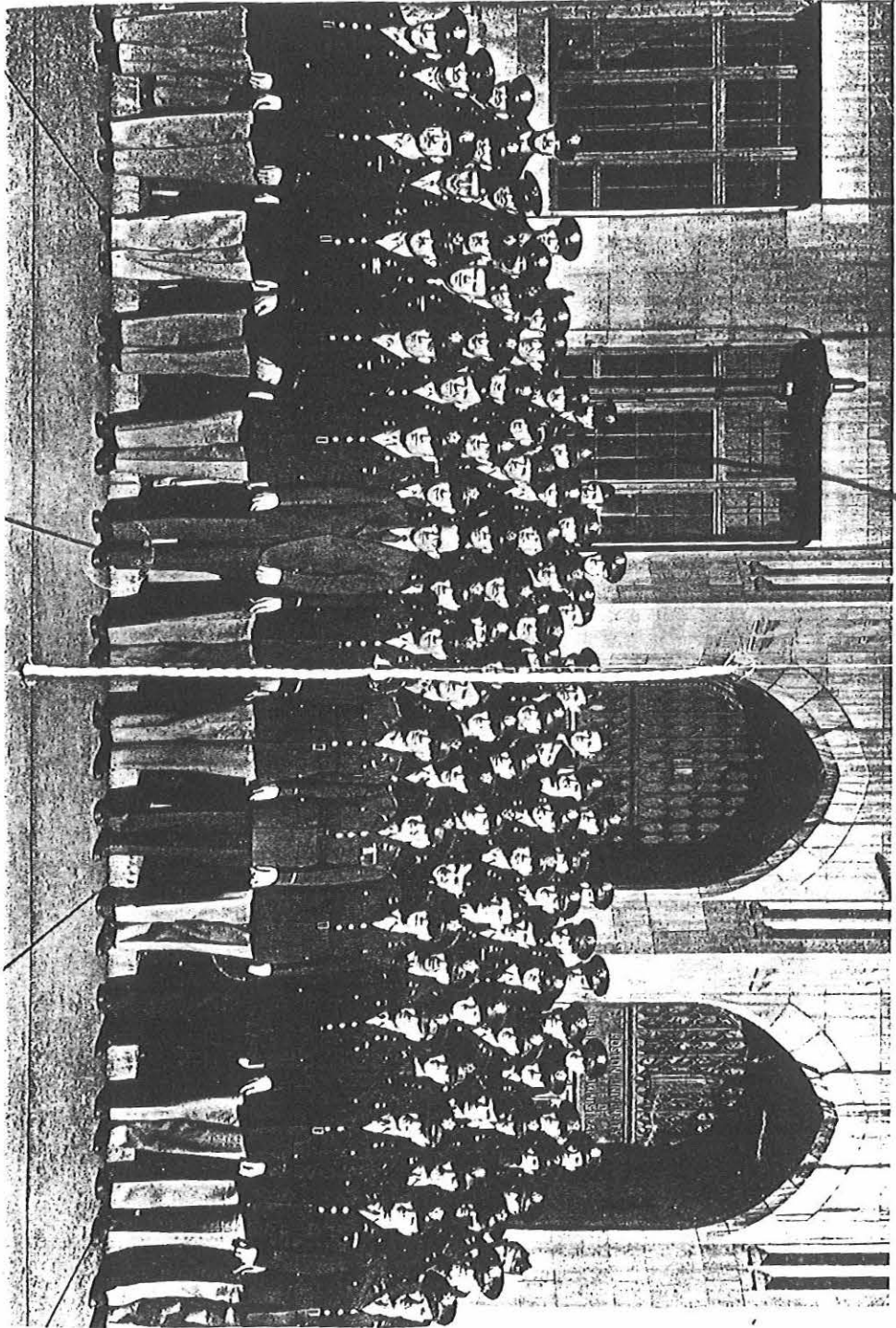
Severin, Timothy. The Oriental Adventure: Explorers of the East.
Boston: Little, Brown, 1976.

Swanberg, William A. Whitney Father, Whitney Heiress. New York:
Charles Scribner's Sons, 1980.

Vevier, Charles. The United States and China, 1906-1913: A Study of
Finance and Diplomacy. Princeton, NJ: Rutgers University Press,
1955.

Warner, John. China The Land and Its People, Early Photographs by
John Thomson. Hong Kong: John Warner Publications, 1977.

Worswick, Clark and Spence, Jonathan. Imperial China: Photographs,
1850-1912. Pennwick/Crown, 1978.



H-507

THE FIRST CLASS

INDEX

06/11/80

KEYWORDS	TITLE	TYPE	BX	FL
A. B. CROSS, SALEM, MASSACHUSETTS 1875-1878	Emma Dickerman Straight	ph cc cdv	65	01
A. H. SMITH, SALEM, MASSACHUSETTS n.d.	Friends of Henry and Emma Straight	ph cc cdv	66	01
A-MU-ERH-LING-KUEI 1910c.	Chinese Associates (annotated)	ph	67	07
ADRIATIC (SHIP) 1914	En Route to England	ph	65	13
AGRICULTURE n.d.	Rural Scenes	ph	62	14
n.d.	Chinese Scenes (mounted enlargements)	ph	75	01
1905c.	Rural Scenes	ph	62	15
1905c.	Chinese Scenes	ph	62	06
1907-1908	China, Manchuria, Siberia, Korea (annotated by George Marvin)	alb	60	02
1908	Manchurian Trip	ph	62	35
1908	Manchurian Trip (annotated)	ph	62	38
AINU 1904-1905	Russo-Japanese War (annotated)	alb	58	01
ALTARS n.d.	Temple of Heaven (annotated)	ph	63	12
AMERICAN CEMETERY, SURESNES 1919	American Cemetery, Suresnes	ph neg	22	14
1919-1920	Cemetery Beautification, Suresnes	ph	22	17
1919-1920	Cemetery Beautification, Suresnes (annotated in French)	ph	22	18
AMERICAN EXPEDITIONARY FORCES 1914-1918	World War I	pcb	73	13
1915-1918	World War I (annotated)	ph	65	15
1917c.	Voyage on the Transport "Logan"	neg	71	28
1919	American Cemetery, Suresnes	ph neg	22	14
1919-1920	Cemetery Beautification, Suresnes	ph	22	17
1919-1920	Cemetery Beautification, Suresnes (annotated in French)	ph	22	18
AMERICAN GROUP 1904, 1911	Group Portraits (mounted)	ph	75	04
APPLE GREEN, WESTBURY, NEW YORK n.d.	Westbury (annotated)	ph	66	13
ARCHES n.d.	Ming Tombs (annotated)	ph	63	13
n.d.	Entrances, Arches, Palaces, Temples (annotated)	ph	63	16
n.d.	Bridges, Gates, Arches	ph	62	13
1912	Peking in Ruins	ph	63	32

INDEX

06/11/80

KEYWORDS	TITLE	TYPE	BX	FL
ARCHITECTURAL DETAIL				
n.d.	Chinese Architecture	ph	62	10
n.d.	Entrances, Arches, Palaces, Temples (annotated)	ph	63	16
n.d.	Nichols House, Samuel McIntire architect, 1782 (commercial photographs)	ph	72	05
n.d.	Massachusetts Architecture (commercial photographs)	ph	72	06
1902-1912	China, Cuba, Korea	alb	60	01
ARCHITECTURE, EXTERIOR				
n.d.	Entrances, Arches, Palaces, Temples (annotated)	ph	63	16
n.d.	Temple of Heaven (annotated)	ph	63	12
n.d.	Summer Palace (annotated)	ph	63	11
n.d.	Street Scenes (annotated)	ph	63	17
n.d.	Yellow Temple, Lama Temple (annotated)	ph	63	09
n.d.	Winter Palace (annotated)	ph	63	10
n.d.	Chinese Architecture (annotated)	ph	63	22
n.d.	Chinese Architecture	ph	63	23
n.d.	Chinese Architecture	ph	62	11
n.d.	Chinese Architecture	ph	62	10
n.d.	Bridges, Gates, Arches	ph	62	13
n.d.	Yangtze River (annotated)	ph	62	55
n.d.	Temple of Heaven (annotated)	ph	63	02
n.d.	Scenes of China	ph	63	01
n.d.	Massachusetts Architecture (commercial photographs)	ph	72	06
n.d.	Italian Architecture (commercial photographs)	ph	72	09
n.d.	German and English Architecture (commercial photographs)	ph	72	08
n.d.	French Architecture (commercial photographs)	ph	72	07
n.d.	Raquette Lake	ph	65	25
n.d.	Pictures of Europe	ph	65	26
n.d.	Nichols House, Samuel McIntire architect, 1782 (commercial photographs)	ph	72	05
n.d.	Chinese Buildings	neg	71	07
n.d.	Views of China	neg	71	17
n.d.	Temples	ph	67	09
n.d.	Panoramic Views of China	alb	50	02
n.d.	Buildings and Gates	ph	62	22
n.d.	Canton (annotated)	ph	62	51
n.d.	Korea (annotated)	ph	63	38
n.d.	Peking (annotated)	ph	63	39
1902-1912	China, Cuba, Korea	alb	60	01
1904-1905	Russo-Japanese War, China, Korea (annotated)	alb	61	01
1904-1905	Russo-Japanese War (annotated)	alb	58	01

INDEX

06/11/80

KEYWORDS	TITLE	TYPE	BX	FL
ARCHITECTURE, EXTERIOR				
1904-1905	Russo-Japanese War, Japan, China, and Korea (annotated)	alb	57	01
1904c.	Manchurian Scenes	ph	62	19
1905-1909	Diplomatic Career Residences (annotated)	alb	50	03
1905c.	Chinese Cathedral	ph	62	09
1906	Havana (annotated)	ph	67	03
1906-1908	Mukden (annotated, autographed)	ph cc	64	20
1907-1908	China, Manchuria, Siberia, Korea (annotated by George Marvin)	alb	60	02
1907c.	Consul General, Mukden (autographed)	ph	67	05
1907c.	Consul General, Mukden (annotated)	alb	50	01
1907c.	Charles J. Arnell, U.S. Consulate, Mukden (annotated)	ph	62	27
1907c.	Mukden (annotated)	ph	62	54
1907c.	Mukden (annotated)	ph	62	48
1908	Manchuria	ph	62	47
1908	Manchurian Trip	ph	62	43
1909-1911	Peking Friends and Associates	ph	64	04
1909c.	U.S. Legation, Peking (annotated)	ph	63	04
1910c.	Peking Photographs (note by George D. Marvin)	alb	51	01
1911	Wedding and Honeymoon	ph	66	10
1911c.	Peking Friends and Associates (annotated)	ph	64	06
1911c.	Peking Home, Construction	ph	63	05
1911c.	Peking Home (annotated)	ph	63	29
1912	Manila (annotated)	ph	63	36
1912	Manila	neg	71	23
1912-1915	Country Houses and House Parties	alb	55	01
1912c.	English Country Houses	neg	71	24
1912c.	English Country Houses	ph	65	38
1925c.	Westbury	ph	65	24
1926c.	Westbury	neg	71	29
ARCHITECTURE, INTERIOR				
n.d.	Nichols House, Samuel McIntire architect, 1782 (commercial photographs)	ph	72	05
n.d.	Massachusetts Architecture (commercial photographs)	ph	72	06
n.d.	India House	ph	66	14
1901-1909	Voyage to China, Chinese Imperial Maritime Customs School, Early Career	alb	59	01
1902-1912	China, Cuba, Korea	alb	60	01
1905-1909	Diplomatic Career Residences	alb	50	03

INDEX

06/11/80

KEYWORDS	TITLE	TYPE	BX	FL
ARCHITECTURE, INTERIOR				
	(annotated)			
1906	Havana (annotated)	ph	67	03
1907-1908	China, Manchuria, Siberia, Korea (annotated by George Marvin)	alb	60	02
1908	Manchuria	ph	62	47
1909-1911	Portraits of Willard Straight in China (annotated)	ph	64	03
1910c.	Peking Photographs (note by George D. Marvin)	alb	51	01
1911-1912	Peking Home (annotated)	ph	63	40
1911c.	Peking Home (annotated)	ph	63	29
1911c.	Peking Home	ph	63	07
1911c.	Peking Home, Construction	ph	63	06
1912c.	Dorothy Whitney Straight	ph	64	07
1915-1918	World War I (annotated)	ph	65	15
ARDEN GALLERY, NEW YORK, NEW YORK				
1921	Displays of Artwork by Willard Straight	ph	65	16
ARNELL, CHARLES J.				
1906-1908	Mukden (annotated, autographed)	ph cc	64	20
1907c.	Consul General, Mukden (annotated)	ph	67	04
1907c.	Consul General, Mukden (autographed)	ph	67	05
1907c.	Consul General, Mukden (annotated)	alb	50	01
1907c.	Mukden (annotated)	ph	62	48
1907c.	Charles J. Arnell, U.S. Consulate, Mukden (annotated)	ph	62	27
ART, INDIAN				
n.d.	British Museum Indian Art	pcb	73	05
ART, ITALIAN				
n.d.	Italian Postcards	pcc pcb	73	07
ART, JAPAN				
1905c.	Japanese Art	pcb pcc	74	02
B. TINDALL				
n.d.	Paintings of Clipper Ships	ph	66	15
B.S. ALFORD, OSWEGO, NEW YORK				
1885c.	Straight Family	ph cdv	65	02
BALDWIN COOLIDGE, BOSTON, MASSACHUSETTS				
1880-1897	Childhood Portraits of Willard Straight	ph cdv	65	03
1880-1901	Childhood Portraits of Willard Straight	ph	65	05
1882-1887	Childhood Portraits of Hazel Straight	ph cc	65	07
BAMBOO				
1908	Manchurian Trip (annotated)	ph	62	41
1908	Manchurian Trip (annotated)	ph	62	31
BEARD, N. C. (MRS.)				
n.d.	Great-grandmother Beard	ph	65	27

INDEX

06/11/80

KEYWORDS	TITLE	TYPE	BX	FL
BEARD, N.C. (MRS.)	(genealogical annotation)			
1885c.	Straight Family	ph cdv	65	02
BEARDSLEY, OSWEGO, NEW YORK				
1875-1878	Emma Dickerman Straight	ph cc cdv	65	01
1875-1880	Emma Dickerman Straight	ph cc	65	08
BELL TOWER				
n.d.	Chinese Architecture (annotated)	ph	63	22
BEND, BEATRICE				
1907-1910	Friends (annotated)	ph	65	10
1911-1917	Friends and Relatives	ph	65	33
1913-1918	Family Portraits, Children	ph	66	11
1913c.	Seventeen-Eighteen H Street	ph	65	30
BEND, MARRAINE				
1915c.	Mrs. Bend and the Children	neg	71	25
BILOWSKI, SURESNES, FRANCE				
1919	American Cemetery, Suresnes	ph neg	22	14
BISHOP, BEATRICE				
1911	Wedding and Honeymoon	ph	66	10
BLAND, JOHN O.P.				
n.d.	Great Wall	ph	63	15
1902-1912	China, Cuba, Korea	alb	60	01
1907-1908	China, Manchuria, Siberia, Korea (annotated by George Marvin)	alb	60	02
BOARDMAN, MABEL L.				
1905c.	U.S. Legation, Seoul (annotated, autographed)	ph	67	02
BOATS				
n.d.	Rivers, Docks, and Boats (annotated)	ph	63	25
n.d.	Winter Palace (annotated)	ph	63	10
n.d.	Chinese River Scenes	ph	63	26
n.d.	Chinese Boats and Ships (annotated)	ph	62	12
n.d.	Canton (annotated)	ph	62	51
n.d.	Saigon	ph	63	37
n.d.	Canton (annotated)	ph	62	53
n.d.	Maritime Scenes	neg	71	15
n.d.	Maritime Scenes	neg	71	14
1907c.	Views of China	alb	56	01
1908	Manchurian Trip	ph	62	28
1908	Manchurian Trip (annotated)	ph	62	31
1908	Manchurian Trip	ph	62	44
BOISSONNAS & CAPONIER, PARIS, FRANCE				
1910c.	Portraits of Friends and Associates (autographed, annotated)	ph	65	29
BORDENTOWN MILITARY INSTITUTE				
1896-1897	Bordentown Military Institute	ph	65	28
BOTANICAL GARDEN, SAIGON				
n.d.	Saigon	ph	63	37

INDEX

06/11/80

KEYWORDS	TITLE	TYPE	BX	FL
BOTANICAL GARDENS, EUITENZORG, JAVA				
n.d.	Java - Buitenzorg Botanical Gardens (commercial photographs)	ph	72	13
1909	Java Scenes	ph	63	42
BOWDITCH, PETER				
1912	Manila (annotated)	ph	63	36
BRANDS STUDIOS, CHICAGO, ILLINOIS				
1881-1887	Childhood Portraits of Willard Straight	ph cc	65	06
1882-1887	Childhood Portraits of Hazel Straight	ph cc	65	07
BRAZIL, RIO DE JANEIRO				
1916, n.d.	Mexican and Brazilian Postcards (annotated)	pcc pcb	73	03
BRIDGES				
n.d.	Chinese Buildings	neg	71	07
n.d.	Bridges, Gates, Arches	ph	62	13
n.d.	Winter Palace (annotated)	ph	63	10
n.d.	Rivers, Docks, and Boats (annotated)	ph	63	25
n.d.	Chinese Views	ph	63	18
n.d.	Canton (annotated)	ph	62	51
1904-1905	Russo-Japanese War, Japan, China, and Korea (annotated)	alb	57	01
1907-1908	China, Manchuria, Siberia, Korea (annotated by George Marvin)	alb	60	02
1908	Manchuria	ph	62	47
BRITISH ARMY				
1912	Peking in Ruins	ph	63	32
BRITISH MUSEUM, LONDON, ENGLAND				
n.d.	British Museum Indian Art	pcb	73	05
C. ARAKI				
1907c.	Chinese Officials (annotated, autographed)	cc	64	13
C.B. WAITE, MEXICO CITY				
n.d.	Views of Mexico (commercial photographs)	ph	72	01
n.d.	Views of Mexico (commercial photographs)	ph	72	04
n.d.	Views of Mexico (commercial photographs)	ph	72	03
n.d.	Views of Mexico (commercial photographs)	ph	72	02
C.E. LEMUNYON, PEKING AND TIENTSIN, CHINA				
1904-1911	Associates (autographed, annotated)	ph cc	66	09
1909-1911	Portraits of Willard Straight in China (annotated)	ph	64	03
1910c.	Portraits of Friends and Associates (autographed, annotated)	ph	65	29
1910c.	Portraits (mounted)	ph	75	03

INDEX

06/11/80

KEYWORDS	TITLE	TYPE	BX	FL
C.E. LEMUNYCN, PEKING AND TIENTSIN, CHINA enlargements)				
CALHOUN, LUCY				
n.d.	Groups of Women, Chinese and Western	ph	64	09
1909-1911	Peking Friends and Associates	ph	64	04
1909-1911	Straights and Friends	ph	64	01
1909-1912	Peking (annotated)	ph	64	21
CALHOUN, WILLIAM J.				
1902-1915	Friends and Associates	alb	53	01
1904, 1911	Group Portraits (mounted)	ph	75	04
1909-1911	Straights and Friends	ph	64	01
1909-1911	Peking Friends and Associates	ph	64	04
1909-1911	Portraits of Willard Straight in China (annotated)	ph	64	03
1909-1912	Peking (annotated)	ph	64	21
1910c.	Portraits of Friends and Associates (autographed, annotated)	ph	65	29
1911	Friends and Associates	ph	64	10
1911	Willard Straight and Associates (annotated)	ph	64	11
1911c.	Groups of Westerners	neg	71	21
1912	Peking in Ruins	ph	63	32
CALIFORNIA				
n.d.	United States Postcards	pcc pcb	73	01
CALIFORNIA, PASADENA				
n.d.	Tombs of Henry and Emma Straight (annotated)	ph	65	09
CAMEL CARAVANS				
n.d.	Transportation (annotated)	ph	63	24
n.d.	Chinese Scenes (mounted enlargements)	ph	75	01
n.d.	Chinese Scenes (mounted enlargements)	ph	75	02
n.d.	Panoramic Views of China	alb	50	02
1904-1905	Russo-Japanese War, China, Korea (annotated)	alb	61	01
1905c.	Rural Scenes	ph	62	15
1907c.	Views of China	alb	56	01
1908	Manchurian Trip, Scenes of Chinese Life (annotated)	ph	62	46
1910c.	Views of Peking (annotated)	ph	63	03
CAMERAS				
1907-1910	Friends (annotated)	ph	65	10
CAMP OF INSTRUCTION, REGULAR TROOPS, PLATTSBURG, NEW YORK				
1902-1915	Friends and Associates	alb	53	01
1915	Camp of Instruction, Regular Troops, Plattsburg, New York (annotated)	alb	54	01
1915	Camp of Instruction, Regular Troops, Plattsburg, New York	ph	65	36
1915	Plattsburg	neg	71	27

INDEX

06/11/80

KEYWORDS	TITLE	TYPE	BX	FL
CANADA				
n.d.	Mountain Scenes (commercial photographs)	ph	67	11
n.d.	Published Guides and Souvenir Views	ph	74	23
CANADA, BRITISH COLUMBIA				
n.d.	Canadian Postcards	pcc	73	02
CANALS				
n.d.	Hankow and Hanyang (annotated)	ph	62	52
CANOVA STUDIOS, CHICAGO, ILLINOIS				
1875-1880	Emma Dickerman Straight	ph cc	65	08
1881-1887	Childhood Portraits of Willard Straight	ph cc	65	06
1882-1887	Childhood Portraits of Hazel Straight	ph cc	65	07
CASENAVE, MAURICE				
1902-1915	Friends and Associates	alb	53	01
1904-1911	Associates (autographed, annotated)	ph cc	66	09
1904, 1911	Group Portraits (mounted)	ph	75	04
1907-1908	China, Manchuria, Siberia, Korea (annotated by George Marvin)	alb	60	02
1909-1912	Peking (annotated)	ph	64	21
1911	Friends and Associates	ph	64	10
1911	Willard Straight and Associates (annotated)	ph	64	11
1911-1917	Friends and Relatives	ph	65	33
1911c.	Groups of Westerners	neg	71	21
1911c.	Western Men	neg	71	19
1911c.	Peking Friends and Associates (annotated)	ph	64	06
1912-1915	Country Houses and House Parties	alb	55	01
1913-1918	Family Portraits, Children	ph	66	11
CATHEDRALS				
1905c.	Chinese Cathedral	ph	62	09
CEMETERIES				
1919	American Cemetery, Suresnes	ph neg	22	14
1919-1920	Cemetery Beautification, Suresnes (annotated in French)	ph	22	18
CEMETERY BEAUTIFICATION				
1919	American Cemetery, Suresnes	ph neg	22	14
1919-1920	Cemetery Beautification, Suresnes (annotated in French)	ph	22	18
CEREMONIES				
n.d.	Chinese Street Scenes	neg	71	08
1904-1905	Russo-Japanese War, Japan, China, and Korea (annotated)	alb	57	01
1905c.	Chinese Cathedral	ph	62	09
1907c.	Views of China	alb	56	01

INDEX

06/11/80

KEYWORDS	TITLE	TYPE	BX	FL
CEREMONIES				
1908	Manchurian Trip	ph	62	44
1909	Funeral Procession of the Empress Dowager	ph	63	28
1909	Funeral Procession of the Empress Dowager	ph	63	27
1910c.	Peking Landmarks	pcc pcb	74	15
1919	American Cemetery, Suresnes	ph neg	22	14
1919-1920	Cemetery Beautification, Suresnes (annotated in French)	ph	22	18
CEYLON				
1901	Voyage to China (annotated)	ph	62	01
1901	Voyage to China	neg	71	01
1909-1912	Willard and Dorothy Straight	ph	65	12
CEYLON, COLCMBO				
1901-1909	Voyage to China, Chinese Imperial Maritime Customs School, Early Career	alb	59	01
CHANG TEMELE, CANTON				
n.d.	Canton (annotated)	ph	62	51
CHAO, ERH-HSUN				
1910c.	Chinese Associates (annotated)	ph	67	07
CHEN, CHAO-CHUNG				
1907c.	Chinese Officials (annotated, autographed)	cc	64	13
CHENG SAN PHOTOGRAPHER				
n.d.	Chinese Women	ph cc	64	16
n.d.	Chinese Women (annotated)	ph	64	22
CHILDREN				
n.d.	People (annotated)	ph	63	20
n.d.	Chinese Scenes (annotated)	ph	63	19
n.d.	Chinese Women (annotated)	ph	64	22
n.d.	Chinese Scenes (mounted enlargements)	ph	75	01
1904-1905	Russo-Japanese War, Japan, China, and Korea (annotated)	alb	57	01
1904c.	Korea	ph	62	21
1905c.	Rural Scenes	ph	62	24
1907c.	Siberia	ph	63	08
1911c.	Chinese People	neg	71	16
1913-1925	Straight Children	ph	65	17
1921-1924	Straight Family	ph	65	18
1921-1924	Westbury and Woods Hole	ph	65	19
1921-1925	Michael Whitney Straight	ph	65	20
1921c.	Straight Children	ph	66	12
1922, 1925	Beatrice Whitney Straight, Westbury	ph	65	21
1923-1924	Beatrice Whitney Straight, Woods Hole	ph	65	22
1924	Michael Whitney Straight, Woods Hole	ph	65	23

INDEX

06/11/80

KEYWORDS	TITLE	TYPE	BX	FL
CHINA				
n.d.	Scenes	neg	71	18
n.d.	Chinese Street Scenes	neg	71	08
n.d.	Great Wall	neg	71	05
n.d.	Chinese Buildings	neg	71	07
n.d.	Scenes of China and Korea (commercial photographs)	ph	72	11
n.d.	Chinese Scenes (mounted enlargements)	ph	75	01
n.d.	China Scenes (annotated)	pcb	74	22
n.d.	People (annotated)	ph	63	20
n.d.	Chinese Architecture	ph	62	10
n.d.	Chinese Boats and Ships (annotated)	ph	62	12
n.d.	Rural Scenes	ph	62	14
n.d.	Bridges, Gates, Arches	ph	62	13
n.d.	Buildings and Gates	ph	62	22
n.d.	Panoramic Views of China	alb	50	02
1902-1910	Railroads	neg	71	11
1902c.	Social Acquaintances	ph	62	04
1902c.	Portraits	ph	62	03
1905c.	Chinese Scenes	ph	62	06
1905c.	Rural Scenes	ph	62	15
1905c.	Street Scenes	ph	62	16
1905c.	Chinese Cathedral	ph	62	09
1905c.	Chinese Street Scenes	neg	71	10
1909	Westerners in China	neg	71	06
1910c.	Ming Tombs	pcb	74	21
1911c.	Western Men	neg	71	19
1911c.	Chinese People	neg	71	16
1911c.	People in China	neg	71	22
1911c.	Groups of Westerners	neg	71	21
CHINA, CANTON				
n.d.	Canton (annotated)	ph	62	51
n.d.	Canton (annotated)	ph	62	53
1910c.	Canton	pcb pcc	74	18
CHINA, CHANGCHOW				
n.d.	Yangtze River (annotated)	ph	62	55
CHINA, CHIU-CHIANG				
n.d.	Yangtze River (annotated)	ph	62	56
n.d.	Yangtze River (annotated)	ph	62	55
CHINA, HANKOW				
n.d.	Rivers, Docks, and Boats (annotated)	ph	63	25
n.d.	Hankow and Hanyang (annotated)	ph	62	52
n.d.	Hankow and Hanyang	ph	62	50
n.d.	Maritime Scenes	neg	71	14
1910c.	Chinese People and Scenes (annotated)	pcc pcb	74	20
1912c.	Chinese Revolution	pcb	74	13
CHINA, HANYANG				
n.d.	Maritime Scenes	neg	71	14
n.d.	Hankow and Hanyang	ph	62	50

INDEX

06/11/80

KEYWORDS	TITLE	TYPE	BX	FL
CHINA, HANYANG n.d.	Hankow and Hanyang (annotated)	ph	62	52
n.d.	Rivers, Docks, and Boats (annotated)	ph	63	25
CHINA, HUPEH 1912c.	Chinese Revolution	pcb	74	13
CHINA, KOWLOCN n.d.	Rivers, Docks, and Boats (annotated)	ph	63	25
CHINA, MANCHURIA n.d.	Chinese Architecture	ph	62	11
1901-1915	Willard Straight's Career	alb	53	02
1902-1910	Railroads	neg	71	12
1902-1912	China, Cuba, Korea	alb	60	01
1902-1915	Friends and Associates	alb	53	01
1904-1905	Russo-Japanese War, Japan, China, and Korea (annotated)	alb	57	01
1904-1905	Russo-Japanese War, China, Korea (annotated)	alb	61	01
1904-1905	Russo-Japanese War	alb	58	02
1904c.	Manchurian Scenes	ph	62	19
1905c.	Chinese Scenes	ph	62	05
1907c.	Views of China	alb	56	01
1908	Manchurian Trip (annotated)	ph	62	29
1908	Manchurian Trip	ph	62	28
1908	Manchurian Trip, Scenes of Chinese Life (annotated)	ph	62	46
1908	Manchurian Trip (annotated)	ph	62	42
1908	Manchurian Trip	ph	62	44
1908	Manchurian Trip	ph	62	43
1908	Manchurian Trip, Scenes of Chinese Life	ph	62	45
1908	Manchuria	ph	62	47
1908	Manchurian Trip (annotated)	ph	62	33
1908	Manchurian Trip	ph	62	35
1908	Manchurian Trip (annotated)	ph	62	32
1908	Manchurian Trip	ph	62	34
1908	Manchurian Trip (annotated)	ph	62	31
1908	Manchurian Trip (annotated)	ph	62	30
1908	Manchurian Trip	ph	62	40
1908	Manchurian Trip (annotated)	ph	62	37
1908	Manchurian Trip (annotated)	ph	62	41
1908	Manchurian Trip (annotated)	ph	62	38
1908	Manchurian Trip (annotated)	ph	62	39
1908	Manchurian Trip (annotated)	ph	62	36
1908	Gift Enlargements (autographed)	ph	67	08
1908c.	Street Scenes	ph	62	23
1910c.	Chinese Associates (annotated)	ph	67	07
1910c.	Portraits (mounted enlargements)	ph	75	03

INDEX

06/11/80

KEYWORDS	TITLE	TYPE	BX	FL
CHINA, MANCHURIA, ANTUNG n.d.	Chinese Boats and Ships (annotated)	ph	62	12
CHINA, MANCHURIA, HARBIN 1905c.	Harbin	pcb	74	17
CHINA, MANCHURIA, MUKDEN 1904-1905	Russo-Japanese War (annotated)	alb	58	01
1905-1909	Diplomatic Career Residences (annotated)	alb	50	03
1906-1908	Mukden (annotated, autographed)	ph cc	64	20
1906c.	Mukden	neg	71	04
1907-1908	China, Manchuria, Siberia, Korea (annotated by George Marvin)	alb	60	02
1907c.	Consul General, Mukden (autographed)	ph	67	05
1907c.	Consul General, Mukden (annotated)	ph	67	04
1907c.	Consul General, Mukden (annotated)	alb	50	01
1907c.	Charles J. Arnell, U.S. Consulate, Mukden (annotated)	ph	62	27
1907c.	Views of China	alb	56	01
1907c.	Mukden (annotated)	ph	62	48
1907c.	Mukden (annotated)	ph	62	54
1907c.	Polo in China (annotated, sketch)	ph	64	02
1909-1911	Straights and Friends	ph	64	01
CHINA, MANCHURIA, NEWCHWANG 1902-1912	China, Cuba, Korea	alb	60	01
CHINA, NANKING n.d.	Yangtze River (annotated)	ph	62	55
1901-1902	Early Career	ph	62	17
1901-1909	Voyage to China, Chinese Imperial Maritime Customs School, Early Career	alb	59	01
1902	Chinese Imperial Maritime Customs Service	ph	67	01
1910c.	Peking Photographs (note by George D. Marvin)	alb	51	01
CHINA, PEKING n.d.	Straights and Friends	ph	64	05
n.d.	Peking (annotated)	ph	63	39
n.d.	Chinese Scenes (mounted enlargements)	ph	75	02
n.d.	Chinese Friends and Associates	ph	64	15
n.d.	Chinese Architecture	ph	62	11
n.d.	Scenes of China	ph	63	01
n.d.	Temple of Heaven (annotated)	ph	63	02
n.d.	Chinese Architecture (annotated)	ph	63	22

INDEX

06/11/80

KEYWORDS	TITLE	TYPE	BX	FL
CHINA, PEKING				
n.d.	Street Scenes (annotated)	ph	63	17
n.d.	Winter Palace (annotated)	ph	63	10
n.d.	Summer Palace (annotated)	ph	63	11
n.d.	Yellow Temple, Lama Temple (annotated)	ph	63	09
n.d.	Entrances, Arches, Palaces, Temples (annotated)	ph	63	16
n.d.	Temple of Heaven (annotated)	ph	63	12
n.d.	Chinese Women (annotated)	ph	64	22
1901-1902	Early Career	ph	62	17
1901-1902	Peking Social Acquaintances (annotated)	ph	62	02
1901-1909	Voyage to China, Chinese Imperial Maritime Customs School, Early Career	alb	59	01
1902-1912	China, Cuba, Korea	alb	60	01
1902-1915	Friends and Associates	alb	53	01
1904-1905	Russo-Japanese War (annotated)	alb	58	01
1904-1905	Russo-Japanese War, China, Korea (annotated)	alb	61	01
1905-1909	Diplomatic Career Residences (annotated)	alb	50	03
1909	Funeral Procession of the Empress Dowager	ph	63	28
1909	Funeral Procession of the Empress Dowager	ph	63	27
1909-1911	Peking Friends and Associates	ph	64	04
1909-1911	Portraits of Willard Straight in China (annotated)	ph	64	03
1909-1911	Straights and Friends	ph	64	01
1909-1912	Willard and Dorothy Straight	ph	65	12
1909-1912	Peking (annotated)	ph	64	21
1909c.	Straights and Friends	ph	64	14
1909c.	U.S. Legation, Peking (annotated)	ph	63	04
1910c.	Views of Peking (annotated)	ph	63	03
1910c.	Chinese Associates (annotated)	ph	67	07
1910c.	Peking Landmarks	pcc pcb	74	15
1910c.	Transportation, Peking (annotated)	pcb	74	16
1910c.	Summer Palace	pcc pcb	74	14
1910c.	Peking Photographs (note by George D. Marvin)	alb	51	01
1911	Willard Straight and Associates (annotated)	ph	64	11
1911	Friends and Associates	ph	64	10
1911-1912	Peking Home (annotated)	ph	63	40
1911c.	Peking Friends and Associates (annotated)	ph	64	06
1911c.	Peking Home, Construction	ph	63	05
1911c.	Peking Home	ph	63	07

INDEX

06/11/80

KEYWORDS	TITLE	TYPE	BX	FL
CHINA, PEKING				
1911c.	Peking Home, Construction	ph	63	06
1911c.	Peking Home (annotated)	ph	63	29
1911c.	Western People	neg	71	20
1912	Peking in Ruins	ph	63	30
1912	Peking in Ruins	ph	63	31
1912	Peking in Ruins	ph	63	33
1912	Peking in Ruins	ph	63	32
1912	Peking in Ruins	ph	63	35
1912	Peking in Ruins (annotated)	ph	63	34
1912c.	Dorothy Whitney Straight	ph	64	07
CHINA, SHANGHAI				
n.d.	Yangtze River (annotated)	ph	62	55
n.d.	Yangtze River (annotated)	ph	62	56
CHINA, SOOCHOW				
n.d.	Yangtze River (annotated)	ph	62	55
CHINA, TIENTISIN				
1908c.	Chinese Family Portraits (annotated, autographed)	ph	67	06
CHINA, WUHU				
n.d.	Hankow and Hanyang (annotated)	ph	62	52
CHINESE ARMY				
n.d.	Chinese Scenes (annotated)	ph	63	19
1907-1908	China, Manchuria, Siberia, Korea (annotated by George Marvin)	alb	60	02
1908	Manchurian Trip (annotated)	ph	62	30
1908	Manchurian Trip, Scenes of Chinese Life (annotated)	ph	62	46
CHINESE ARMY, CAVALRY				
1908	Manchurian Trip (annotated)	ph	62	42
CHINESE ARMY, INFANTRY				
1901-1909	Voyage to China, Chinese Imperial Maritime Customs School, Early Career	alb	59	01
1908	Manchurian Trip (annotated)	ph	62	29
CHINESE ARMY, LIGHT ARTILLERY				
1908	Manchurian Trip (annotated)	ph	62	32
CHINESE ARMY, OFFICERS				
1908	Manchurian Trip (annotated)	ph	62	33
1908	Manchurian Trip (annotated)	ph	62	30
1908	Manchurian Trip (annotated)	ph	62	29
CHINESE CURRENCY AND INDUSTRIAL DEVELOPMENT LOAN				
1904, 1911	Group Portraits (mounted)	ph	75	04
CHINESE IMPERIAL MARITIME CUSTOMS SERVICE				
1901-1909	Voyage to China, Chinese Imperial Maritime Customs School, Early Career	alb	59	01
CHINESE IMPERIAL MARITIME CUSTOMS SERVICE COLLEGE				
1902	Chinese Imperial Maritime Customs Service	ph	67	01
CHOU, SHU-MO				
1907c.	Chinese Officials (annotated,	cc	64	13

INDEX

06/11/80

KEYWORDS	TITLE	TYPE	BX	FL
CHOU, SHU-MO	autographed)			
CHRISTIAN GRAVEYARD 1908	Manchurian Trip (annotated)	ph	62	42
CHURCH OF ST. JOHN, MACAO n.d.	Macao	ph	62	49
CHURCHES 1912	Manila (annotated)	ph	63	36
CITY SCENES n.d.	Street Scenes (annotated)	ph	63	17
n.d.	Chinese Architecture (annotated)	ph	63	22
n.d.	Hankow and Hanyang	ph	62	50
n.d.	Hankow and Hanyang (annotated)	ph	62	52
n.d.	Peking (annotated)	ph	63	39
1904-1905	Russo-Japanese War, China, Korea (annotated)	alb	61	01
1904-1905	Russo-Japanese War	ph	62	18
1908	Manchurian Trip	ph	62	44
1908c.	Street Scenes	ph	62	23
1910c.	Views of Peking (annotated)	ph	63	03
CLARK, GEORGE 1911-1917	Friends and Relatives	ph	65	33
CLARK, GERTRUDE 1911-1917	Friends and Relatives	ph	65	33
CLARK, HERMAN 1911-1917	Friends and Relatives	ph	65	33
COAL HILL, PEKING n.d.	Peking (annotated)	ph	63	39
COLLINS, ROBERT M. 1904-1905	Russo-Japanese War Correspondent	ph	64	18
1904, 1911	Group Portraits (mounted)	ph	75	04
CONGER, EDWIN H. 1901-1902	Peking Social Acquaintances (annotated)	ph	62	02
CONSTRUCTION n.d.	Chinese Scenes	ph	62	20
1911c.	Peking Home, Construction	ph	63	05
1911c.	Peking Home, Construction	ph	63	06
CORBETT, MAY n.d.	Groups of Women, Chinese and Western	ph	64	09
CORDES, HENRY 1909-1912	Peking (annotated)	ph	64	21
CORNELL ERA 1897-1901	Student Scrapbook	alb	32	01
CORNELL U. 1897-1901	Student Scrapbook	alb	32	01
1897-1901	Cornell (annotated)	ph	66	06
1899-1901	Student Scrapbook	alb	31	04
1902-1912	China, Cuba, Korea	alb	60	01

INDEX

06/11/80

KEYWORDS	TITLE	TYPE	BX	FL
CORNELL WIDOW				
1897-1901	Student Scrapbook	alb	32	01
1899-1901	Student Scrapbook	alb	31	04
CORNELLIAN				
1899-1901	Student Scrapbook	alb	31	04
CRIME AND PUNISHMENT				
1904-1905	Russo-Japanese War, Japan, China, and Korea (annotated)	alb	57	01
1908	Manchurian Trip, Scenes of Chinese Life	ph	62	45
CROLY, HERBERT D.				
n.d.	Friends	ph	65	11
CUBA				
1905-1906	Alice Roosevelt Longworth	neg	71	03
CUBA, HAVANA				
1902-1912	China, Cuba, Korea	alb	60	01
1906	Havana (annotated)	ph	67	03
CUBA, SAN JUAN HILL				
1902-1912	China, Cuba, Korea	alb	60	01
CUBA, SANTIAGO-DE-CUBA				
1902-1912	China, Cuba, Korea	alb	60	01
DALNY				
1904-1905	Russo-Japanese War	alb	58	02
1904-1905	Russo-Japanese War (annotated)	alb	58	01
DAVIS, CECIL				
n.d.	Photographs of Paintings	ph	65	34
1902-1915	Friends and Associates	alb	53	01
1904-1905	Russo-Japanese War, Japan, China, and Korea (annotated)	alb	57	01
DAVIS, RICHARD H.				
1901-1915	Willard Straight's Career	alb	53	02
1902-1915	Friends and Associates	alb	53	01
1904-1905	Russo-Japanese War, Japan, China, and Korea (annotated)	alb	57	01
DAVISON, HENRY P.				
1910c.	Portraits of Friends and Associates (autographed, annotated)	ph	65	29
1910c.	Portraits (mounted enlargements)	ph	75	03
1914	En Route to England	ph	65	13
DELTA TAU DELTA, BETA OMICRON CHAPTER				
1899-1901	Student Scrapbook	alb	31	04
DICKERMAN, WILLARD A.				
1885c.	Straight Family	ph cdv	65	02
DOCKS				
n.d.	Rivers, Docks, and Boats (annotated)	ph	63	25
n.d.	Hankow and Hanyang (annotated)	ph	62	52
n.d.	Canton (annotated)	ph	62	51
n.d.	Hankow and Hanyang	ph	62	50
n.d.	Canton (annotated)	ph	62	53

INDEX

06/11/80

KEYWORDS	TITLE	TYPE	BX	FL
DOCKS				
n.d.	Views of China	neg	71	17
n.d.	Maritime Scenes	neg	71	15
DOUGHBOY (STATUE)				
1919-1920	Cemetery Beautification, Suresnes (annotated in French)	ph	22	18
1919-1920	Cemetery Beautification, Suresnes	ph	22	17
DRESS				
n.d.	Java People (commercial photographs)	ph	72	14
n.d.	Java People (commercial photographs)	ph	72	16
n.d.	People (annotated)	ph	63	20
n.d.	Chinese Scenes (mounted enlargements)	ph	75	01
n.d.	Chinese Women (annotated)	ph	64	22
n.d.	Chinese Women	ph cc	64	16
n.d.	Chinese Friends and Associates	ph	64	15
1880-1901	Childhood Portraits of Willard Straight	ph	65	05
1904-1905	Russo-Japanese War (annotated)	alb	58	01
1904-1905	Russo-Japanese War, Japan, China, and Korea (annotated)	alb	57	01
1904c.	Portraits of Korean People	pcb pcc	74	11
1904c.	Portraits of Korean People	pcb pcc	74	12
1905c.	Street Scenes	ph	62	08
1905c.	Chinese Street Scenes	neg	71	10
1907-1910	Friends (annotated)	ph	65	10
1907c.	Chinese Officials (annotated, autographed)	cc	64	13
1910c.	Chinese Officials (annotated, autographed)	cc	64	17
1910c.	Portraits (mounted enlargements)	ph	75	03
1910c.	Chinese Associates (annotated)	ph	67	07
1911c.	Chinese People	neg	71	16
1912	Manila	neg	71	23
1912	English Country Parties	ph	65	37
1912c.	English Country Parties	ph	65	39
1912c.	Dorothy Whitney Straight	ph	64	07
1913-1916	Narragansett and Westbury	ph	65	14
E.L. FOWLER, CHICAGO, ILLINOIS				
n.d.	Friends of Henry and Emma Straight	ph cc cdv	66	01
EBUCHI				
1904-1905	Japanese Officials in Korea (annotated, autographed)	cc ph	64	19
EGAN, ELEANOR				
1907c.	Siberia	ph	63	08

INDEX

06/11/80

KEYWORDS	TITLE	TYPE	BX	FL
EGAN, MARTIN				
1901-1915	Willard Straight's Career	alb	53	02
1904-1905	Russo-Japanese War, Japan, China, and Korea (annotated)	alb	57	01
1905-1909	Diplomatic Career Residences (annotated)	alb	50	03
1907c.	Siberia	ph	63	08
1913-1916	Narragansett and Westbury	ph	65	14
EGYPT, PORT SAID				
1901-1909	Voyage to China, Chinese Imperial Maritime Customs School, Early Career	alb	59	01
ELIZABETH DICKSON, NEW YORK, NEW YORK				
1913-1918	Family Portraits, Children	ph	66	11
ELLIOT & FRY, LONDON, ENGLAND				
1904-1911	Associates (autographed, annotated)	ph cc	66	09
ELMHIRST, LEONARD K.				
1921-1924	Straight Family	ph	65	18
EMPRESS DOWAGER, TZ'U HSI				
1901-1909	Voyage to China, Chinese Imperial Maritime Customs School, Early Career	alb	59	01
1909	Funeral Procession of the Empress Dowager	ph	63	28
1909	Funeral Procession of the Empress Dowager	ph	63	27
ENGLAND				
n.d.	British Postcards	pcc pcb	73	04
n.d.	German and English Architecture (commercial photographs)	ph	72	08
1912	English Country Parties	ph	65	37
1912-1915	Country Houses and House Parties	alb	55	01
1912c.	English Country Parties	ph	65	39
1912c.	English Country Houses	ph	65	38
1912c.	English Country Houses	neg	71	24
ESCORT				
1908	Manchurian Trip (annotated)	ph	62	42
1908	Manchurian Trip (annotated)	ph	62	41
1908	Manchurian Trip (annotated)	ph	62	38
1908	Manchurian Trip (annotated)	ph	62	39
1908	Manchurian Trip	ph	62	40
1908	Manchurian Trip	ph	62	35
1908	Manchurian Trip (annotated)	ph	62	37
1908	Manchurian Trip (annotated)	ph	62	33
1908	Manchurian Trip (annotated)	ph	62	36
EUROPE				
n.d.	Pictures of Europe	ph	65	26
FAIRCHILD, NELSON				
1906-1908	Mukden (annotated, autographed)	ph cc	64	20

INDEX

06/11/80

KEYWORDS	TITLE	TYPE	BX	FL
FASSETT, CHICAGO, ILLINOIS				
1881-1887	Childhood Portraits of Willard Straight	ph cc	65	06
FFRENCH, CHARLES				
n.d.	Straights and Friends	ph	64	05
1902-1915	Friends and Associates	alb	53	01
1911	Friends and Associates	ph	64	10
1911	Willard Straight and Associates (annotated)	ph	64	11
1911c.	Western Men	neg	71	19
1912	English Country Parties	ph	65	37
FIREPLACES				
n.d.	Massachusetts Architecture (commercial photographs)	ph	72	06
1911c.	Peking Home	ph	63	07
FISHING INDUSTRY				
n.d.	Rivers, Docks, and Boats (annotated)	ph	63	25
n.d.	Macao	ph	62	49
FLETCHER, HENRY P.				
1902-1912	China, Cuba, Korea	alb	60	01
1902-1915	Friends and Associates	alb	53	01
1904-1905	Russo-Japanese War, Japan, China, and Korea (annotated)	alb	57	01
1907-1910	Friends (annotated)	ph	65	10
1909-1911	Peking Friends and Associates	ph	64	04
1909-1911	Straights and Friends	ph	64	01
1911-1917	Friends and Relatives	ph	65	33
1913-1918	Family Portraits, Children	ph	66	11
1913c.	Seventeen-Eighteen H Street	ph	65	30
FLOWER PAGODA, CANTON				
n.d.	Canton (annotated)	ph	62	51
FORBIDDEN CITY				
n.d.	Street Scenes (annotated)	ph	63	17
1910c.	Views of Peking (annotated)	ph	63	03
FRANCE				
n.d.	Pictures of Europe	ph	65	26
n.d.	French Architecture (commercial photographs)	ph	72	07
n.d.	Published Guides and Souvenir Views	ph	73	21
FRANCE, ANDELOT				
1914-1917	French Postcards	pcb	73	08
FRANCE, CHAMONIX				
1907-1910	Friends (annotated)	ph	65	10
FRANCE, DIVCNNE				
1909-1912	Willard and Dorothy Straight	ph	65	12
FRANCE, FERTE-SOUS-JOUARRE				
1914-1917	French Postcards	pcb	73	08
FRANCE, LANGRES				
n.d.	Langres	pcb pcc	73	11
n.d.	Old Langres	pcb	73	10
n.d.	Langres	pcc pcb	73	12
n.d.	Old Langres	pcb	73	09

INDEX

06/11/80

KEYWORDS	TITLE	TYPE	BX	FL
FRANCE, LANGRES n.d.	Published Guides and Souvenir Views	ph	73	21
1915-1918	World War I (annotated)	ph	65	15
FRANCE, LORRAINE 1914-1918	World War I in Lorraine	pcb	73	14
FRANCE, LUNEVILLE 1914-1918	World War I in Lorraine	pcb	73	14
1914-1918	World War I	pcb	73	13
1914c.	Luneville before World War I	pcb	73	16
1914c.	Luneville before World War I	pcb	73	15
FRANCE, MONTEUILL-AUX-LIONS 1914-1917	French Postcards	pcb	73	08
FRANCE, NANCY 1914-1918	World War I	pcb	73	13
1914c.	Nancy	pcb	73	17
FRANCE, NICE 1914-1917	French Postcards	pcb	73	08
FRANCE, SURESNES 1919	American Cemetery, Suresnes	ph neg	22	14
1919-1920	Cemetery Beautification, Suresnes (annotated in French)	ph	22	18
1919-1920	Cemetery Beautification, Suresnes	ph	22	17
FRANK COUSINS ART CO., SALEM, MASSACHUSETTS n.d.	Massachusetts Architecture (commercial photographs)	ph	72	06
n.d.	Nichols House, Samuel McIntire architect, 1782 (commercial photographs)	ph	72	05
FRED BOISSONNAS, GENEVA, SWITZERLAND 1911	Wedding and Honeymoon	ph	66	10
FU HSING, PHOTOGRAPHER, TIENTSIN 1908c.	Chinese Family Portraits (annotated, autographed)	ph	67	06
FULFORD, HARRY E. 1907c.	Consul General, Mukden (autographed)	ph	67	05
1907c.	Consul General, Mukden (annotated)	ph	67	04
FUNERAL OF EMPRESS DOWAGER 1909	Funeral Procession of the Empress Dowager	ph	63	28
1909	Funeral Procession of the Empress Dowager	ph	63	27
FURUYA 1904-1905	Japanese Officials in Korea (annotated, autographed)	cc ph	64	19
GARDENS n.d.	Chinese Views	ph	63	18
n.d.	Nichols House, Samuel McIntire architect, 1782 (commercial photographs)	ph	72	05

INDEX

06/11/80

KEYWORDS	TITLE	TYPE	BX	FL
GARDENS				
1902-1912	China, Cuba, Korea	alb	60	01
1909c.	U.S. Legation, Peking (annotated)	ph	63	04
1912c.	English Country Houses	neg	71	24
1912c.	English Country Houses	ph	65	38
1912c.	English Country Parties	ph	65	39
1925c.	Westbury	ph	65	24
1926c.	Westbury	neg	71	29
GATES				
n.d.	Bridges, Gates, Arches	ph	62	13
n.d.	Street Scenes (annotated)	ph	63	17
n.d.	Entrances, Arches, Palaces, Temples (annotated)	ph	63	16
n.d.	Buildings and Gates	ph	62	22
1908	Manchuria	ph	62	47
1909c.	U.S. Legation, Peking (annotated)	ph	63	04
1910c.	Views of Peking (annotated)	ph	63	03
1912	Peking in Ruins	ph	63	33
GATRELL, THOMAS J.				
1901-1915	Willard Straight's Career	alb	53	02
1902-1915	Friends and Associates	alb	53	01
1904, 1911	Group Portraits (mounted)	ph	75	04
1909-1912	Peking (annotated)	ph	64	21
1910c.	Peking Photographs (note by George D. Marvin)	alb	51	01
1911	Willard Straight and Associates (annotated)	ph	64	11
GEORGE CARY, ARCHITECT				
1897-1901	Cornell (annotated)	ph	66	06
GERMAN ARMY				
1912	Peking in Ruins	ph	63	32
GERMAN ARMY, INFANTRY				
1901-1909	Voyage to China, Chinese Imperial Maritime Customs School, Early Career	alb	59	01
GERMAN CONSULATE, MUKDEN				
1907-1908	China, Manchuria, Siberia, Korea (annotated by George Marvin)	alb	60	02
GERMANY				
n.d.	German and English Architecture (commercial photographs)	ph	72	08
GILLETT, FREDERICK				
1905c.	U.S. Legation, Seoul (annotated, autographed)	ph	67	02
GILLIS, J. V.				
1906-1908	Mukden (annotated, autographed)	ph cc	64	20
1908	Manchurian Trip (annotated)	ph	62	36
1908	Manchurian Trip (annotated)	ph	62	42
1908	Manchurian Trip (annotated)	ph	62	30

INDEX

06/11/80

KEYWORDS	TITLE	TYPE	BX	FL
GILLIS, J. V.				
1908	Manchurian Trip (annotated)	ph	62	29
1908	Manchurian Trip (annotated)	ph	62	31
GOLDBECK, WAITER D.				
n.d.	Photographs of Paintings	ph	65	34
GOVERNMENT OFFICIALS				
n.d.	Chinese Scenes (mounted enlargements)	ph	75	01
1907c.	Mukden (annotated)	ph	62	54
1908	Manchurian Trip (annotated)	ph	62	29
1908	Manchurian Trip (annotated)	ph	62	31
1908	Manchurian Trip (annotated)	ph	62	36
GREAT WALL				
n.d.	Chinese Scenes (mounted enlargements)	ph	75	02
n.d.	Great Wall	neg	71	05
n.d.	Great Wall	ph	63	15
n.d.	Great Wall	ph	63	14
n.d.	Transportation (annotated)	ph	63	24
1902-1912	China, Cuba, Korea	alb	60	01
1909c.	Straights and Friends	ph	64	14
1910c.	Chinese People and Scenes (annotated)	pcc pcb	74	20
GRISCOM, LLOYD				
1904-1905	Russo-Japanese War, Japan, China, and Korea (annotated)	alb	57	01
HAGIWARA, S.				
1904-1905	Japanese Officials in Korea (annotated, autographed)	cc ph	64	19
1907c.	Consul General, Mukden (annotated)	ph	67	04
HAN RIVER				
n.d.	Hankow and Hanyang (annotated)	ph	62	52
HAO, MADAME				
n.d.	Chinese Women (annotated)	ph	64	22
HARBORS				
n.d.	Macao	ph	62	49
n.d.	Rivers and Ships	ph	62	25
n.d.	Maritime Scenes	neg	71	15
HARRIMAN, FLORENCE J.				
1910c.	Portraits of Friends and Associates (autographed, annotated)	ph	65	29
1911-1917	Friends and Relatives	ph	65	33
HARRIS & EWING, WASHINGTON, D.C.				
1900-1915	Portraits of Willard Straight	ph	66	08
1913c.	Seventeen-Eighteen H Street	ph	65	30
1915	Camp of Instruction, Regular Troops, Plattsburg, New York (annotated)	alb	54	01
HART, ROBERT				
1904-1911	Associates (autographed, annotated)	ph cc	66	09

INDEX

06/11/80

KEYWORDS	TITLE	TYPE	BX	FL
HART, ROBERT 1907-1908	China, Manchuria, Siberia, Korea (annotated by George Marvin)	alb	60	02
HAYASHI 1904-1905	Japanese Officials in Korea (annotated, autographed)	cc ph	64	19
HELEN MCCAUL 1913-1918	Family Portraits, Children	ph	66	11
HILLIER, E. G. 1909-1912	Peking (annotated)	ph	64	21
HISTED, LONDON, ENGLAND 1900-1915 1910c.	Portraits of Willard Straight Portraits of Friends and Associates (autographed, annotated)	ph ph	66 65	08 29
1913-1917	Portraits of Willard Straight	ph	65	31
HOLWILL, CLAUDE N. 1907-1908	China, Manchuria, Siberia, Korea (annotated by George Marvin)	alb	60	02
HONG KONG n.d.	Rivers, Docks, and Boats (annotated)	ph	63	25
1910c.	Hong Kong, Macao	pcb pcc	74	19
HOWES ART GALLERY, ITHACA, NEW YORK 1897-1901	Cornell (annotated)	ph	66	07
HSI-LIANG 1910c.	Chinese Officials (annotated, autographed)	cc	64	17
HSU, TING-LIN n.d.	Chinese Friends and Associates	ph	64	15
1911	Friends and Associates	ph	64	10
ICE SKATING n.d.	Straights and Friends	ph	64	05
INDIA n.d.	Views of India (commercial photographs)	ph	67	12
n.d.	Scenes of India (commercial photographs)	ph	72	12
INDIA HOUSE n.d.	India House	ph	66	14
n.d.	Paintings of Clipper Ships	ph	66	15
INDO-CHINA, SAIGON n.d.	Saigon	ph	63	37
INDUSTRY n.d.	Korea (annotated)	ph	63	38
ITALY n.d.	Italian Architecture (commercial photographs)	ph	72	09
n.d.	Photographs of Artwork (commercial photographs)	ph	72	10
n.d.	Italian Postcards	pcc pcb	73	07

INDEX

06/11/80

KEYWORDS	TITLE	TYPE	BX	FL
ITALY, STRESA 1911	Wedding and Honeymoon	ph	66	10
ITALY, VENICE n.d.	Italian Postcards	pcc pcb	73	07
J. A. SCHOLTEN, ST. LOUIS, MISSOURI 1885c.	Straight Family	ph cdv	65	02
J. E. SMITH'S STUDIOS, BORDENTOWN, NEW JERSEY 1880-1901	Childhood Portraits of Willard Straight	ph	65	05
JADE GREEN CLOUD TEMPLE n.d.	Scenes of China	ph	63	01
JAPAN 1880-1901	Childhood Portraits of Willard Straight	ph	65	05
1904-1905	Russo-Japanese War, China, Korea (annotated)	alb	61	01
1904-1905	Russo-Japanese War (annotated)	alb	58	01
1905c.	Japanese Scenes	pcb	74	05
1905c.	Japanese Scenes	pcb	74	04
1905c.	Japanese People	pcb pcc	74	01
1905c.	Japanese Art	pcb pcc	74	02
1905c.	Japanese Scenes	pcc	74	03
1910c.	Portraits (mounted enlargements)	ph	75	03
JAPAN, HAKODATE 1904-1905	Russo-Japanese War (annotated)	alb	58	01
JAPAN, KYOTO 1905-1909	Diplomatic Career Residences (annotated)	alb	50	03
JAPAN, TOKYO 1904-1905	Russo-Japanese War, Japan, China, and Korea (annotated)	alb	57	01
JAPANESE ARMY n.d.	Military Scenes	ph	62	57
1904-1905	Russo-Japanese War	ph	62	18
1904c.	Korea	ph	62	21
1907-1908	China, Manchuria, Siberia, Korea (annotated by George Marvin)	alb	60	02
JAPANESE ARMY, ARTILLERY 1904-1905	Russo-Japanese War	alb	58	02
JAPANESE ARMY, INFANTRY 1904-1905	Russo-Japanese War	alb	58	02
1904-1905	Russo-Japanese War (annotated)	alb	58	01
1905c.	Russo-Japanese War	alb	52	01
JAPANESE ARMY, OFFICERS 1904-1905	Russo-Japanese War (annotated)	alb	58	01
1904-1905	Russo-Japanese War	alb	58	02
1904-1905	Russo-Japanese War, Japan, China, and Korea (annotated)	alb	57	01

INDEX

06/11/80

KEYWORDS	TITLE	TYPE	BX	FL
JAPANESE ARMY, OFFICERS 1904-1905	Russo-Japanese War, China, Korea (annotated)	alb	61	01
JAPANESE NAVY, SALVAGE OPERATION 1904-1905	Russo-Japanese War (annotated)	alb	58	01
JAVA				
n.d.	Java People (commercial photographs)	ph	72	14
n.d.	Java Scenes (commercial photographs)	ph	72	15
1910c.	People of Java	pcc	73	19
1910c.	Java and Johor	pcb pcc	73	18
1910c.	People of Java	pcb	73	20
JAVA, BATAVIA 1909	Java	ph	63	41
JAVA, BUITENZORG n.d.	Java - Buitenzorg Botanical Gardens (commercial photographs)	ph	72	13
1909	Java	ph	63	41
1909	Java Scenes	ph	63	42
JOHOR 1910c.	Java and Johor	pcb pcc	73	18
JORDAN, JOHN N. 1904-1911	Associates (autographed, annotated)	ph cc	66	09
1904, 1911	Group Portraits (mounted)	ph	75	04
K. IWATA, SEOUL, KOREA 1904-1905	Japanese Officials in Korea (annotated, autographed)	cc ph	64	19
K. MURAKAMI, SEOUL, KOREA 1904-1905	Japanese Officials in Korea (annotated, autographed)	cc ph	64	19
1905c.	U.S. Legation, Seoul (annotated, autographed)	ph	67	02
K. OGAWA, TOKYO, JAPAN 1904, n.d.	Portraits (annotated)	cc	64	12
KALGAN RAILWAY 1910c.	Peking Photographs (note by George D. Marvin)	alb	51	01
KINNICUTT, MAY 1911-1917	Friends and Relatives	ph	65	33
KOLMAKOVA, VLADIVOSTOK, RUSSIA n.d.	Chinese Women	ph cc	64	16
KOREA n.d.	Scenes of China and Korea (commercial photographs)	ph	72	11
n.d.	Korea (annotated)	ph	63	38
n.d.	People (annotated)	ph	63	20
1901-1915	Willard Straight's Career	alb	53	02
1902-1910	Railroads	neg	71	11
1902-1910	Railroads	neg	71	12
1902-1912	China, Cuba, Korea	alb	60	01

INDEX

06/11/80

KEYWORDS	TITLE	TYPE	BX	FL
KOREA				
1904-1905	Russo-Japanese War	alb	58	02
1904-1905	Russo-Japanese War, China, Korea (annotated)	alb	61	01
1904c.	Korea	ph	62	21
1904c.	Korean Scenes	pcb	74	07
1904c.	Portraits of Korean People	pcb pcc	74	12
1904c.	Korean Women and Village Scenes	pcb	74	09
1904c.	Portraits of Korean People	pcb pcc	74	11
1904c.	Korean Scenes	pcb	74	08
1904c.	Korean Occupations	pcb	74	10
1904c.	Korean Scenes	pcb	74	06
1905-1906	Alice Roosevelt Longworth	neg	71	03
1905c.	Chinese Street Scenes	neg	71	09
1905c.	Chinese Street Scenes	neg	71	10
1905c.	Street Scenes	ph	62	08
KOREA, SEOUL				
1904-1905	Russo-Japanese War, China, Korea (annotated)	alb	61	01
1904-1905	Japanese Officials in Korea (annotated, autographed)	cc ph	64	19
1904-1905	Russo-Japanese War, Japan, China, and Korea (annotated)	alb	57	01
1905-1909	Diplomatic Career Residences (annotated)	alb	50	03
1905c.	U.S. Legation, Seoul (annotated, autographed)	ph	67	02
1907-1908	China, Manchuria, Siberia, Korea (annotated by George Marvin)	alb	60	02
1907c.	Charles J. Arnell, U.S. Consulate, Mukden (annotated)	ph	62	27
KOREAN ARMY				
1905c.	Russo-Japanese War	neg	71	02
KOREAN ARMY, OFFICERS				
n.d.	People (annotated)	ph	63	20
KUNG, PRINCE				
1911	Friends and Associates	ph	64	10
KUNG, PRINCESS				
n.d.	Chinese Women	ph cc	64	16
n.d.	Chinese Women (annotated)	ph	64	22
n.d.	Groups of Women, Chinese and Western	ph	64	09
KUROKI, GENERAL				
1904-1905	Russo-Japanese War Correspondent	ph	64	18
LAI FONG				
n.d.	Paintings of Clipper Ships	ph	66	15
LAKE HANGCHOW				
n.d.	Yangtze River (annotated)	ph	62	55
LAMA TEMPLE				
n.d.	Yellow Temple, Lama Temple (annotated)	ph	63	09

INDEX

06/11/80

KEYWORDS	TITLE	TYPE	BX	FL
LANDSCAPES				
n.d.	Great Wall	ph	63	14
n.d.	Chinese Views	ph	63	18
n.d.	Great Wall	ph	63	15
n.d.	Ming Tombs (annotated)	ph	63	13
n.d.	Scenes of China	ph	63	01
n.d.	Rural Scenes	ph	62	14
n.d.	Mounted Chinese Scenes	ph	67	10
n.d.	Yangtze River (annotated)	ph	62	55
n.d.	Panoramic Views of China	alb	50	02
n.d.	Ragquette Lake	ph	65	25
n.d.	Scenes	neg	71	18
1901-1909	Voyage to China, Chinese Imperial Maritime Customs School, Early Career	alb	59	01
1904-1905	Russo-Japanese War, China, Korea (annotated)	alb	61	01
1905c.	Rural Scenes	ph	62	15
1905c.	Rural Scenes	ph	62	24
1907c.	Consul General, Mukden (annotated)	alb	50	01
1907c.	Siberia	ph	63	08
1908	Manchurian Trip	ph	62	28
1908	Manchurian Trip	ph	62	34
1908	Manchurian Trip	ph	62	35
1908	Manchurian Trip (annotated)	ph	62	33
1908	Manchurian Trip (annotated)	ph	62	38
1908	Manchurian Trip (annotated)	ph	62	41
1908	Manchurian Trip (annotated)	ph	62	42
1908	Manchurian Trip (annotated)	ph	62	39
1909	Java	ph	63	41
1910c.	Peking Photographs (note by George D. Marvin)	alb	51	01
1911	Wedding and Honeymoon	ph	66	10
1912	Manila (annotated)	ph	63	36
1912	Manila	neg	71	23
LANGFIER LTD., LONDON, ENGLAND				
1913-1917	Portraits of Willard Straight	ph	65	31
LEE, MARY				
n.d.	Friends of Henry and Emma Straight	ph cc cdv	66	01
LEVASSEUR, PARIS, FRANCE				
1919-1920	Cemetery Beautification, Suresnes (annotated in French)	ph	22	18
LOGAN, JAMES A.				
1913c.	Seventeen-Eighteen H Street	ph	65	30
LOIZEAU, PARIS, FRANCE				
1919-1920	Cemetery Beautification, Suresnes (annotated in French)	ph	22	18
LONGWORTH, ALICE R.				
1902-1912	China, Cuba, Korea	alb	60	01
1905-1906	Alice Roosevelt Longworth	neg	71	03

INDEX

06/11/80

KEYWORDS	TITLE	TYPE	BX	FL
LONGWORTH, ALICE R.				
1906	Havana (annotated)	ph	67	03
1907-1908	China, Manchuria, Siberia, Korea (annotated by George Marvin)	alb	60	02
LONGWORTH, NICHOLAS				
1902-1912	China, Cuba, Korea	alb	60	01
1905c.	U.S. Legation, Seoul (annotated, autographed)	ph	67	02
1906	Havana (annotated)	ph	67	03
1907-1908	China, Manchuria, Siberia, Korea (annotated by George Marvin)	alb	60	02
LOUIS MCQUAID, WESTEBURY, NEW YORK				
n.d.	Photographs of Paintings	ph	65	34
IOVELL, OSWEGO, NEW YORK				
n.d.	Hazel S. Sanborn and Family	ph	66	04
1880-1897	Childhood Portraits of Willard Straight	ph cdv	65	03
1882-1887	Childhood Portraits of Hazel Straight	ph cc	65	07
1911-1917	Friends and Relatives	ph	65	33
LUMBER				
n.d.	Korea (annotated)	ph	63	38
n.d.	Hankow and Hanyang (annotated)	ph	62	52
n.d.	Rivers and Ships	ph	62	26
1908	Manchurian Trip	ph	62	28
LUMBER YARD				
n.d.	Rural Scenes	neg	71	13
LUNG-HUA PAGODA				
n.d.	Yangtze River (annotated)	ph	62	56
MACAO				
n.d.	Macao	ph	62	49
1910c.	Hong Kong, Macao	pcb pcc	74	19
MACARTHUR, DOUGLAS				
1905-1909	Diplomatic Career Residences (annotated)	alb	50	03
1905c.	U.S. Legation, Seoul (annotated, autographed)	ph	67	02
MACDONALD, CLAUDE				
1904-1905	Russo-Japanese War, Japan, China, and Korea (annotated)	alb	57	01
1904-1911	Associates (autographed, annotated)	ph cc	66	09
MACDONALD, ETHEL				
1904-1911	Associates (autographed, annotated)	ph cc	66	09
MANSHU MARU (SHIP)				
1904-1905	Russo-Japanese War, Japan, China, and Korea (annotated)	alb	57	01
MARBLE BOAT				
n.d.	Summer Palace (annotated)	ph	63	11

INDEX

06/11/80

KEYWORDS	TITLE	TYPE	BX	FL
MARGARET D.M. BROWN n.d.	Hazel S. Sanborn and Family	ph	66	04
MARITIME SCENES n.d.	Maritime Scenes	neg	71	14
1904-1905	Russo-Japanese War, China, Korea (annotated)	alb	61	01
MARKETS 1908c.	Street Scenes	ph	62	23
MARVIN, GEORGE D. 1904-1911	Associates (autographed, annotated)	ph cc	66	09
1906-1908	Mukden (annotated, autographed)	ph cc	64	20
1907-1908	China, Manchuria, Siberia, Korea (annotated by George Marvin)	alb	60	02
1907c.	Siberia	ph	63	08
1907c.	Consul General, Mukden (annotated)	ph	67	04
1907c.	Consul General, Mukden (autographed)	ph	67	05
1907c.	Mukden (annotated)	ph	62	48
1907c.	Polo in China (annotated, sketch)	ph	64	02
1910c.	Portraits of Friends and Associates (autographed, annotated)	ph	65	29
1913c.	Seventeen-Eighteen H Street	ph	65	30
MASSACHUSETTS, CAPE COD n.d.	Published Guides and Souvenir Views	ph	74	23
MASSACHUSETTS, SALEM n.d.	Massachusetts Architecture (commercial photographs)	ph	72	06
n.d.	Nichols House, Samuel McIntire architect, 1782 (commercial photographs)	ph	72	05
MASSACHUSETTS, WOODS HOLE 1921-1924	Westbury and Woods Hole	ph	65	19
1921-1924	Straight Family	ph	65	18
1921-1925	Michael Whitney Straight	ph	65	20
1923-1924	Beatrice Whitney Straight, Woods Hole	ph	65	22
1924	Michael Whitney Straight, Woods Hole	ph	65	23
MAURY, JAMES 1880-1897	Childhood Portraits of Willard Straight	ph cdv	65	03
MCCORMICK, FREDERICK 1903-1905	Russo-Japanese War Correspondents (annotated)	ph	62	07
MCCOY, FRANK 1913c.	Seventeen-Eighteen H Street	ph	65	30

INDEX

06/11/80

KEYWORDS	TITLE	TYPE	BX	FL
MENOCAL, BEATRICE DE 1909-1912 1911c.	Peking (annotated) Peking Friends and Associates (annotated)	ph ph	64 64	21 06
MENOCAL, DANIEL A. DE 1909-1912 1911c.	Peking (annotated) Peking Friends and Associates (annotated)	ph ph	64 64	21 06
MEXICO n.d.	Views of Mexico (commercial photographs)	ph	72	03
n.d.	Views of Mexico (commercial photographs)	ph	72	02
n.d.	Views of Mexico (commercial photographs)	ph	72	04
n.d.	Views of Mexico (commercial photographs)	ph	72	01
MEXICO, CUERNAVACA 1916, n.d.	Mexican and Brazilian Postcards (annotated)	pcc pcb	73	03
MEZGER, OTTO 1907-1908	China, Manchuria, Siberia, Korea (annotated by George Marvin)	alb	60	02
1907c.	Consul General, Mukden (annotated)	alb	50	01
1907c.	Consul General, Mukden (autographed)	ph	67	05
1907c.	Consul General, Mukden (annotated)	ph	67	04
MILES, BASIL 1913c.	Seventeen-Eighteen H Street	ph	65	30
MILITARY TRAINING 1908	Manchurian Trip (annotated)	ph	62	32
1908	Manchurian Trip (annotated)	ph	62	30
MILITIA 1908	Manchurian Trip (annotated)	ph	62	41
MINES n.d.	Korea (annotated)	ph	63	38
MING TOMBS n.d.	Chinese Architecture	ph	62	10
n.d.	Ming Tombs (annotated)	ph	63	13
1901-1909	Voyage to China, Chinese Imperial Maritime Customs School, Early Career	alb	59	01
1907-1908	China, Manchuria, Siberia, Korea (annotated by George Marvin)	alb	60	02
1910c.	Ming Tombs	pcb	74	21
MISSES SELBY, NEW YORK, 1915c.	NEW YORK Baby Pictures	ph	65	32
MONASTERIES 1901-1909	Voyage to China, Chinese Imperial Maritime Customs	alb	59	01

INDEX

06/11/80

KEYWORDS	TITLE	TYPE	BX	FL
MONASTERIES	School, Early Career			
MORGAN, EDWIN V.				
1901-1915	Willard Straight's Career	alb	53	02
1902-1912	China, Cuba, Korea	alb	60	01
1902-1915	Friends and Associates	alb	53	01
1904-1905	Russo-Japanese War, Japan, China, and Korea (annotated)	alb	57	01
1904-1905	Russo-Japanese War, China, Korea (annotated)	alb	61	01
1905-1909	Diplomatic Career Residences (annotated)	alb	50	03
1905c.	U.S. Legation, Seoul (annotated, autographed)	ph	67	02
1906	Havana (annotated)	ph	67	03
MORLEY, MARGARET W.				
n.d.	Friends of Henry and Emma Straight	ph cc cdv	66	01
MORRISON, GEORGE E.				
1901	Voyage to China (annotated)	ph	62	01
1904-1911	Associates (autographed, annotated)	ph cc	66	09
1907c.	Consul General, Mukden (annotated)	ph	67	04
MURATA				
1904, n.d.	Portraits (annotated)	cc	64	12
MURPHY, GRAYSON P.				
n.d.	Photographs of Paintings	ph	65	34
NANKOU PASS				
n.d.	Great Wall	ph	63	14
NESBITT, OSWEGO, NEW YORK				
n.d.	Friends of Henry and Emma Straight	ph cc cdv	66	01
1890-1912	Hazel Henrietta Straight Sanborn	ph cc	66	03
NEW JERSEY, BORDENTOWN				
1880-1901	Childhood Portraits of Willard Straight	ph	65	05
1896-1897	Bordentown Military Institute	ph	65	28
NEW YORK				
n.d.	United States Postcards	pcc pcb	73	01
NEW YORK, BUFFALO				
1897-1901	Cornell (annotated)	ph	66	06
NEW YORK, ITHACA				
1897-1901	Cornell (annotated)	ph	66	06
1897-1901	Student Scrapbook	alb	32	01
1899-1901	Student Scrapbook	alb	31	04
NEW YORK, NEW YORK				
1921-1925	Michael Whitney Straight	ph	65	20
NEW YORK, OSWEGO				
n.d.	Friends of Henry and Emma Straight	ph cc cdv	66	01
1911-1917	Friends and Relatives	ph	65	33

INDEX

06/11/80

KEYWORDS	TITLE	TYPE	BX	FL
NEW YORK, PLATTSBURG				
1901-1915	Willard Straight's Career	alb	53	02
1902-1915	Friends and Associates	alb	53	01
1913-1917	Portraits of Willard Straight	ph	65	31
1914-1918	Adult Portraits of Willard Straight	ph	65	04
1915	Camp of Instruction, Regular Troops, Plattsburg, New York	ph	65	36
1915	Plattsburg	neg	71	27
NEW YORK, RAQUETTE LAKE				
n.d.	Raquette Lake	ph	65	25
NEW YORK, WESTBURY				
n.d.	Westbury (annotated)	ph	66	13
1911-1917	Friends and Relatives	ph	65	33
1912-1915	Country Houses and House Parties	alb	55	01
1913-1916	Narragansett and Westbury	ph	65	14
1913-1925	Straight Children	ph	65	17
1917c.	Straight Family	neg	71	26
1921-1924	Westbury and Woods Hole	ph	65	19
1921-1924	Straight Family	ph	65	18
1921-1925	Michael Whitney Straight	ph	65	20
1922, 1925	Beatrice Whitney Straight, Westbury	ph	65	21
1925c.	Westbury	ph	65	24
1926c.	Westbury	neg	71	29
NEWKIRK, LAURA R.				
1911-1917	Friends and Relatives	ph	65	33
NORTHROP, OSWEGO, NEW YORK				
1890-1912	Hazel Henrietta Straight Sanborn	ph cc	66	03
NORWAY				
n.d.	Norwegian Postcards	pcc pcb	73	06
O. MONROE, DUNKIRK, NEW YORK				
1885c.	Straight Family	ph cdv	65	02
OCCUPATIONS				
n.d.	People (annotated)	ph	63	20
n.d.	Rivers and Ships	ph	62	26
n.d.	Macao	ph	62	49
1904-1905	Russo-Japanese War, Japan, China, and Korea (annotated)	alb	57	01
1905c.	Rural Scenes	ph	62	24
1905c.	Chinese Scenes	ph	62	06
1905c.	Street Scenes	ph	62	16
1905c.	Chinese Street Scenes	neg	71	09
1907-1908	China, Manchuria, Siberia, Korea (annotated by George Marvin)	alb	60	02
1908	Manchurian Trip, Scenes of Chinese Life	ph	62	45
1908c.	Street Scenes	ph	62	23
1909	Java	ph	63	41
OLIVER, OSWEGO, NEW YORK				
1880-1897	Childhood Portraits of Willard	ph cdv	65	03

INDEX

06/11/80

KEYWORDS	TITLE	TYPE	BX	FL
OLIVER, OSWEGO, NEW YORK				
1880-1901	Straight Childhood Portraits of Willard	ph	65	05
1881-1887	Straight Childhood Portraits of Willard	ph cc	65	06
ORPHAN ISLAND				
n.d.	Yangtze River (annotated)	ph	62	56
OYAMA				
1904-1905	Japanese Officials in Korea (annotated, autographed)	cc ph	64	19
P.A. JULEY, NEW YORK, NEW YORK				
n.d.	Photographs of Paintings	ph	65	34
P'U-LUN, PRINCE				
n.d.	Chinese Friends and Associates	ph	64	15
1908c.	Chinese Family Portraits (annotated, autographed)	ph	67	06
1910c.	Chinese Associates (annotated)	ph	67	07
P'U-LUN, PRINCESS				
n.d.	Chinese Friends and Associates	ph	64	15
n.d.	Chinese Women (annotated)	ph	64	22
n.d.	Groups of Women, Chinese and Western	ph	64	09
1908c.	Chinese Family Portraits (annotated, autographed)	ph	67	06
1911	Friends and Associates	ph	64	10
PADDOCK, GORDON				
1902-1915	Friends and Associates	alb	53	01
1904-1905	Russo-Japanese War, China, Korea (annotated)	alb	61	01
1905-1909	Diplomatic Career Residences (annotated)	alb	50	03
1905c.	U.S. Legation, Seoul (annotated, autographed)	ph	67	02
1907-1908	China, Manchuria, Siberia, Korea (annotated by George Marvin)	alb	60	02
1912c.	Westerners in China (annotated)	ph	64	08
PAGET, DOROTHY W.				
1911	Wedding and Honeymoon	ph	66	10
PAGET, OLIVE C.				
1911	Wedding and Honeymoon	ph	66	10
PAGODAS				
n.d.	Yangtze River (annotated)	ph	62	55
n.d.	Canton (annotated)	ph	62	51
n.d.	Hankow and Hanyang (annotated)	ph	62	52
n.d.	Yangtze River (annotated)	ph	62	56
n.d.	Chinese Architecture	ph	62	10
n.d.	Chinese Architecture	ph	63	22

INDEX

06/11/80

KEYWORDS	TITLE	TYPE	BX	FL
PAGODAS				
	(annotated)			
1904-1905	Russo-Japanese War, China, Korea (annotated)	alb	61	01
1908	Manchuria	ph	62	47
PAINTINGS				
n.d.	Paintings of Clipper Ships	ph	66	15
n.d.	Photographs of Paintings	ph	65	34
n.d.	Photographs of Artwork (commercial photographs)	ph	72	10
PALACES				
n.d.	Peking (annotated)	ph	63	39
n.d.	Entrances, Arches, Palaces, Temples (annotated)	ph	63	16
n.d.	Chinese Architecture	ph	62	11
n.d.	Scenes of China	ph	63	01
1907-1908	China, Manchuria, Siberia, Korea (annotated by George Marvin)	alb	60	02
1907c.	Mukden (annotated)	ph	62	48
1912	Manila (annotated)	ph	63	36
1912	Manila	neg	71	23
PALMER, FREDERICK				
1903-1905	Russo-Japanese War Correspondents (annotated)	ph	62	07
1904-1905	Russo-Japanese War, Japan, China, and Korea (annotated)	alb	57	01
1904-1905	Russo-Japanese War	alb	58	02
1904, 1911	Group Portraits (mounted)	ph	75	04
PARADES				
1905-1906	Alice Roosevelt Longworth	neg	71	03
PAUL THOMPSON, NEW YORK, NEW YORK				
1921c.	Straight Children	ph	66	12
PEARL RIVER				
n.d.	Canton (annotated)	ph	62	53
PELLING TOMB, MUKDEN				
1907c.	Mukden (annotated)	ph	62	54
1907c.	Mukden (annotated)	ph	62	48
PEKING REBELLION OF 1912				
1912	Peking in Ruins	ph	63	35
1912	Peking in Ruins	ph	63	31
1912	Peking in Ruins	ph	63	32
1912	Peking in Ruins (annotated)	ph	63	34
1912	Peking in Ruins	ph	63	33
1912	Peking in Ruins	ph	63	30
PEOPLE				
n.d.	Java People (commercial photographs)	ph	72	16
1904c.	Portraits of Korean People	pcb pcc	74	11
1904c.	Korean Women and Village Scenes	pcb	74	09
1904c.	Portraits of Korean People	pcb pcc	74	12
1904c.	Korean Occupations	pcb	74	10
1905c.	Japanese People	pcb pcc	74	01

INDEX

06/11/80

KEYWORDS	TITLE	TYPE	BX	FL
PEOPLE				
1907-1908	China, Manchuria, Siberia, Korea (annotated by George Marvin)	alb	60	02
1910c.	People of Java	pcb	73	20
1910c.	People of Java	pcc	73	19
1910c.	Java and Johor	pcb pcc	73	18
1910c.	Chinese People and Scenes (annotated)	pcc pcb	74	20
PEOPLE, GROUPS				
1911	Willard Straight and Associates (annotated)	ph	64	11
1911	Friends and Associates	ph	64	10
1911c.	Groups of Westerners	neg	71	21
PEOPLE, GROUPS OF CHINESE				
1907c.	Consul General, Mukden (annotated)	ph	67	04
1907c.	Consul General, Mukden (autographed)	ph	67	05
1908c.	Chinese Family Portraits (annotated, autographed)	ph	67	06
PEOPLE, GROUPS OF WESTERNERS				
1901-1915	Willard Straight's Career	alb	53	02
1902-1915	Friends and Associates	alb	53	01
1904-1905	Russo-Japanese War, Japan, China, and Korea (annotated)	alb	57	01
1907-1910	Friends (annotated)	ph	65	10
1907c.	Consul General, Mukden (autographed)	ph	67	05
1907c.	Consul General, Mukden (annotated)	ph	67	04
1909-1912	Peking (annotated)	ph	64	21
1911c.	Western Men	neg	71	19
1911c.	Western People	neg	71	20
1912	Manila (annotated)	ph	63	36
1915-1918	World War I (annotated)	ph	65	15
PEOPLE, IDENTIFIED GROUPS				
n.d.	Groups of Women, Chinese and Western	ph	64	09
1904, 1911	Group Portraits (mounted)	ph	75	04
PEOPLE, IDENTIFIED GROUPS OF CHINESE				
n.d.	Chinese Women (annotated)	ph	64	22
PEOPLE, IDENTIFIED GROUPS OF WESTERNERS				
1902	Chinese Imperial Maritime Customs Service	ph	67	01
1912c.	Westerners in China (annotated)	ph	64	08
1921-1924	Straight Family	ph	65	18
PEOPLE, IDENTIFIED INDIVIDUAL CHINESE				
n.d.	Chinese Women	ph cc	64	16
1907c.	Chinese Officials (annotated, autographed)	cc	64	13
1910c.	Chinese Officials (annotated, autographed)	cc	64	17

INDEX

06/11/80

KEYWORDS	TITLE	TYPE	BX	FL
PEOPLE, IDENTIFIED INDIVIDUALS				
1904-1905	Japanese Officials in Korea (annotated, autographed)	cc ph	64	19
1904, n.d.	Portraits (annotated)	cc	64	12
1910c.	Portraits (mounted enlargements)	ph	75	03
PEOPLE, INDIVIDUAL WESTERNERS				
1903-1905	Russo-Japanese War Correspondents (annotated)	ph	62	07
1911c.	Western People	neg	71	20
1911c.	Western Men	neg	71	19
1911c.	People in China	neg	71	22
1912c.	Dorothy Whitney Straight	ph	64	07
PEOPLE, INDIVIDUALS				
n.d.	Chinese Friends and Associates	ph	64	15
1911	Willard Straight and Associates (annotated)	ph	64	11
PEOPLE, UNIDENTIFIED CHINESE				
n.d.	Yangtze River (annotated)	ph	62	55
n.d.	Chinese Scenes (annotated)	ph	63	19
1904-1905	Russo-Japanese War, China, Korea (annotated)	alb	61	01
PEOPLE, UNIDENTIFIED GROUPS				
n.d.	Group Portraits	ph	62	58
1901-1902	Early Career	ph	62	17
1902-1910	Railroads	neg	71	11
1902-1910	Railroads	neg	71	12
1904-1905	Russo-Japanese War Correspondent	ph	64	18
1905-1906	Alice Roosevelt Longworth	neg	71	03
1906c.	Mukden	neg	71	04
1907c.	Mukden (annotated)	ph	62	54
1907c.	Consul General, Mukden (annotated)	alb	50	01
1909	Java Scenes	ph	63	42
1911c.	Chinese People	neg	71	16
1912	Manila	neg	71	23
PEOPLE, UNIDENTIFIED GROUPS OF CHINESE				
n.d.	Mounted Chinese Scenes	ph	67	10
1907c.	Views of China	alb	56	01
PEOPLE, UNIDENTIFIED GROUPS OF JAPANESE				
1910c.	Portraits (mounted enlargements)	ph	75	03
PEOPLE, UNIDENTIFIED GROUPS OF KOREANS				
n.d.	Korea (annotated)	ph	63	38
1905c.	Street Scenes	ph	62	08
PEOPLE, UNIDENTIFIED GROUPS OF WESTERNERS				
n.d.	Friends	ph	65	11
n.d.	Straights and Friends	ph	64	05
1901-1902	Peking Social Acquaintances (annotated)	ph	62	02
1901-1909	Voyage to China, Chinese Imperial Maritime Customs	alb	59	01

INDEX

06/11/80

KEYWORDS	TITLE	TYPE	BX	FL
PEOPLE, UNIDENTIFIED GROUPS OF WESTERNERS				
	School, Early Career			
1902c.	Social Acquaintances	ph	62	04
1904-1905	Russo-Japanese War, China, Korea (annotated)	alb	61	01
1905c.	U.S. Legation, Seoul (annotated, autographed)	ph	67	02
1907c.	Polo in China (annotated, sketch)	ph	64	02
1907c.	Mukden (annotated)	ph	62	48
1909-1911	Straights and Friends	ph	64	01
1911c.	Peking Friends and Associates (annotated)	ph	64	06
1912	English Country Parties	ph	65	37
1912-1915	Country Houses and House Parties	alb	55	01
1912c.	Westerners in China (annotated)	ph	64	08
1912c.	English Country Parties	ph	65	39
1913-1916	Narragansett and Westbury	ph	65	14
1914	En Route to England	ph	65	13
PEOPLE, UNIDENTIFIED INDIVIDUAL CHINESE				
1911c.	Chinese People	neg	71	16
1911c.	People in China	neg	71	22
PEOPLE, UNIDENTIFIED INDIVIDUAL WESTERNERS				
1901-1902	Peking Social Acquaintances (annotated)	ph	62	02
1912c.	English Country Parties	ph	65	39
1917c.	Voyage on the Transport "Logan"	neg	71	28
PEOPLE, UNIDENTIFIED INDIVIDUALS				
n.d.	Scenes	neg	71	18
1901	Voyage to China (annotated)	ph	62	01
1902-1910	Railroads	neg	71	11
1905-1906	Alice Roosevelt Longworth	neg	71	03
1906c.	Mukden	neg	71	04
1915-1918	World War I (annotated)	ph	65	15
PEOPLE, UNIDENTIFIED KOREANS				
1904-1905	Russo-Japanese War, China, Korea (annotated)	alb	61	01
PEOPLE, UNIDENTIFIED WESTERNERS				
1902c.	Portraits	ph	62	03
1909	Westerners in China	neg	71	06
1909-1911	Peking Friends and Associates	ph	64	04
PERSHING, JOHN J.				
1903-1905	Russo-Japanese War Correspondents (annotated)	ph	62	07
1904-1905	Russo-Japanese War	alb	58	02
PHILIPPINES				
n.d.	Scenes	neg	71	18
PHILIPPINES, MANILA				
1912	Manila	neg	71	23
1912	Manila (annotated)	ph	63	36

INDEX

06/11/80

KEYWORDS	TITLE	TYPE	BX	FL
PHILLIPS, WILLIAM				
1911-1917	Friends and Relatives	ph	65	33
1912	English Country Parties	ph	65	37
1913c.	Seventeen-Eighteen H Street	ph	65	30
PHOTOGRAPH ARTISTIC, JAPAN				
1907c.	Chinese Officials (annotated, autographed)	cc	64	13
PI YUN SAN				
n.d.	Chinese Architecture (annotated)	ph	63	22
PIRIE MACDONALD, NEW YORK, NEW YORK				
1910c.	Portraits (mounted enlargements)	ph	75	03
POLO				
1907c.	Polo in China (annotated, sketch)	ph	64	02
PORCELAIN TRADE				
n.d.	Hankow and Hanyang (annotated)	ph	62	52
PORT ARTHUR				
1904-1905	Russo-Japanese War (annotated)	alb	58	01
1904-1905	Russo-Japanese War, Japan, China, and Korea (annotated)	alb	57	01
PORTERS				
1905c.	Chinese Street Scenes	neg	71	09
PORTRAITS				
n.d.	Great-grandmother Beard (genealogical annotation)	ph	65	27
n.d.	Photographs of Paintings	ph	65	34
n.d.	Groups of Women, Chinese and Western	ph	64	09
n.d.	Straights and Friends	ph	64	05
n.d.	Willard Straight's Family, Later Prints	ph	66	02
n.d.	Friends of Henry and Emma Straight	ph cc cdv	66	01
n.d.	Chinese Women	ph cc	64	16
n.d.	Chinese Friends and Associates	ph	64	15
n.d.	Chinese Women (annotated)	ph	64	22
n.d.	Hazel S. Sanborn and Family	ph	66	04
n.d.	Friends	ph	65	11
n.d.	Group Portraits	ph	62	58
1875-1878	Emma Dickerman Straight	ph cc cdv	65	01
1875-1880	Emma Dickerman Straight	ph cc	65	08
1880-1897	Childhood Portraits of Willard Straight	ph cdv	65	03
1880-1901	Childhood Portraits of Willard Straight	ph	65	05
1881-1887	Childhood Portraits of Willard Straight	ph cc	65	06
1882-1887	Childhood Portraits of Hazel Straight	ph cc	65	07

INDEX

06/11/80

KEYWORDS	TITLE	TYPE	BX	FL
PORTRAITS				
1885c.	Straight Family	ph cdv	65	02
1890-1912	Hazel Henrietta Straight Sanborn	ph cc	66	03
1896-1897	Bordentown Military Institute	ph	65	28
1897-1901	Cornell (annotated)	ph	66	06
1897-1901	Cornell (annotated)	ph	66	07
1900-1915	Portraits of Willard Straight	ph	66	08
1901-1902	Early Career	ph	62	17
1901-1909	Voyage to China, Chinese Imperial Maritime Customs School, Early Career	alb	59	01
1901-1915	Willard Straight's Career	alb	53	02
1902-1915	Friends and Associates	alb	53	01
1902c.	Portraits	ph	62	03
1904-1905	Russo-Japanese War, China, Korea (annotated)	alb	61	01
1904-1905	Russo-Japanese War (annotated)	alb	58	01
1904-1905	Russo-Japanese War, Japan, China, and Korea (annotated)	alb	57	01
1904-1905	Japanese Officials in Korea (annotated, autographed)	cc ph	64	19
1904-1911	Associates (autographed, annotated)	ph cc	66	09
1904, n. d.	Portraits (annotated)	cc	64	12
1904, 1911	Group Portraits (mounted)	ph	75	04
1905-1909	Diplomatic Career Residences (annotated)	alb	50	03
1905c.	U.S. Legation, Seoul (annotated, autographed)	ph	67	02
1906-1908	Mukden (annotated, autographed)	ph cc	64	20
1907c.	Chinese Officials (annotated, autographed)	cc	64	13
1907c.	Consul General, Mukden (annotated)	ph	67	04
1907c.	Consul General, Mukden (autographed)	ph	67	05
1908c.	Chinese Family Portraits (annotated, autographed)	ph	67	06
1909-1911	Portraits of Willard Straight in China (annotated)	ph	64	03
1909-1911	Peking Friends and Associates	ph	64	04
1909-1912	Peking (annotated)	ph	64	21
1909-1912	Willard and Dorothy Straight	ph	65	12
1910c.	Chinese Officials (annotated, autographed)	cc	64	17
1910c.	Chinese Associates (annotated)	ph	67	07
1910c.	Straight Family Portraits	ph	66	05
1910c.	Portraits (mounted enlargements)	ph	75	03
1910c.	Portraits of Friends and	ph	65	29

INDEX

06/11/80

KEYWORDS	TITLE	TYPE	BX	FL
PORTRAITS				
	Associates (autographed, annotated)			
1911	Wedding and Honeymoon	ph	66	10
1911	Willard Straight and Associates (annotated)	ph	64	11
1911	Friends and Associates	ph	64	10
1911-1917	Friends and Relatives	ph	65	33
1911c.	Peking Friends and Associates (annotated)	ph	64	06
1912c.	Westerners in China (annotated)	ph	64	08
1912c.	Dorothy Whitney Straight	ph	64	07
1913-1917	Portraits of Willard Straight	ph	65	31
1913-1918	Family Portraits, Children	ph	66	11
1913c.	Seventeen-Eighteen H Street	ph	65	30
1914-1918	Adult Portraits of Willard Straight	ph	65	04
1915c.	Baby Eictures	ph	65	32
1917c.	Straight Family	neg	71	26
1921-1925	Michael Whitney Straight	ph	65	20
1922, 1925	Beatrice Whitney Straight, Westbury	ph	65	21
1923-1924	Beatrice Whitney Straight, Woods Hole	ph	65	22
1924	Michael Whitney Straight, Woods Hole	ph	65	23
PORTS				
n.d.	Canton (annotated)	ph	62	51
POWKEE, SHANGHAI AND NANKING, CHINA				
1901-1909	Voyage to China, Chinese Imperial Maritime Customs School, Early Career	alb	59	01
1904, n.d.	Portraits (annotated)	cc	64	12
PREPAREDNESS MOVEMENT				
1915	Camp of Instruction, Regular Troops, Plattsburg, New York (annotated)	alb	54	01
1915	Camp of Instruction, Regular Troops, Plattsburg, New York	ph	65	36
PRIESTS				
n.d.	Yellow Temple, Lama Temple (annotated)	ph	63	09
1907c.	Views of China	alb	56	01
1907c.	Charles J. Arnell, U.S. Consulate, Mukden (annotated)	ph	62	27
PRINCESS TOMB				
n.d.	Peking (annotated)	ph	63	39
PURPLE COUS				
1909-1912	Peking (annotated)	ph	64	21
RAILROADS				
n.d.	Great Wall	ph	63	15
n.d.	Transportation (annotated)	ph	63	24
n.d.	Korea (annotated)	ph	63	38

INDEX

06/11/80

KEYWORDS	TITLE	TYPE	BX	FL
RAILROADS				
1902-1910	Railroads	neg	71	11
1902-1910	Railroads	neg	71	12
1902-1912	China, Cuba, Korea	alb	60	01
1904-1905	Russo-Japanese War, China, Korea (annotated)	alb	61	01
1904-1905	Russo-Japanese War, Japan, China, and Korea (annotated)	alb	57	01
1904-1905	Russo-Japanese War (annotated)	alb	58	01
1904-1905	Russo-Japanese War	alb	58	02
1904c.	Manchurian Scenes	ph	62	19
1905c.	Street Scenes	ph	62	08
1907-1908	China, Manchuria, Siberia, Korea (annotated by George Marvin)	alb	60	02
1907c.	Siberia	ph	63	08
1907c.	Consul General, Mukden (annotated)	alb	50	01
1910c.	Peking Photographs (note by George D. Marvin)	alb	51	01
1912c.	Westerners in China (annotated)	ph	64	08
RAILROADS, CONSTRUCTION				
1904-1905	Russo-Japanese War	alb	58	02
1904-1905	Russo-Japanese War, Japan, China, and Korea (annotated)	alb	57	01
1905c.	Chinese Scenes	ph	62	06
RAILROADS, HANDCARS				
1902-1910	Railroads	neg	71	12
1902-1910	Railroads	neg	71	11
RAILROADS, LOCOMOTIVES				
n.d.	Transportation (annotated)	ph	63	24
RAILROADS, NARROW-GAUGE				
n.d.	Transportation (annotated)	ph	63	24
1902-1910	Railroads	neg	71	11
RAILROADS, STATIONS				
n.d.	Transportation (annotated)	ph	63	24
1902-1910	Railroads	neg	71	12
1902-1910	Railroads	neg	71	11
RED CROSS				
1904-1905	Russo-Japanese War	alb	58	02
1904-1905	Russo-Japanese War (annotated)	alb	58	01
REMBRANDT, CHICAGO, ILLINOIS				
1910c.	Straight Family Portraits	ph	66	05
RESIDENCE, MUKDEN				
1905-1909	Diplomatic Career Residences (annotated)	alb	50	03
RESIDENCE, PEKING				
1905-1909	Diplomatic Career Residences (annotated)	alb	50	03
1909-1911	Straights and Friends	ph	64	01
1909-1911	Peking Friends and Associates	ph	64	04

INDEX

06/11/80

KEYWORDS	TITLE	TYPE	BX	FL
RESIDENCE, PEKING				
1910c.	Peking Photographs (note by George D. Marvin)	alb	51	01
1911-1912	Peking Home (annotated)	ph	63	40
1911c.	Peking Friends and Associates (annotated)	ph	64	06
1911c.	Western People	neg	71	20
1911c.	Peking Home (annotated)	ph	63	29
1911c.	Peking Home	ph	63	07
1911c.	Peking Home, Construction	ph	63	06
1911c.	Peking Home, Construction	ph	63	05
RESIDENCE, SEOUL				
1905-1909	Diplomatic Career Residences (annotated)	alb	50	03
RHODE ISLAND, NARRAGANSETT				
1913-1916	Narragansett and Westbury	ph	65	14
RIVER SCENES				
n.d.	Rivers, Docks, and Boats (annotated)	ph	63	25
n.d.	Chinese River Scenes	ph	63	26
n.d.	Summer Palace (annotated)	ph	63	11
n.d.	Winter Palace (annotated)	ph	63	10
n.d.	Yangtze River (annotated)	ph	62	56
n.d.	Yangtze River (annotated)	ph	62	55
n.d.	Hankow and Hanyang	ph	62	50
n.d.	Canton (annotated)	ph	62	53
n.d.	Hankow and Hanyang (annotated)	ph	62	52
1908	Manchurian Trip	ph	62	44
1908	Manchurian Trip (annotated)	ph	62	38
1908	Manchurian Trip	ph	62	28
1908	Manchurian Trip (annotated)	ph	62	31
1908	Manchurian Trip	ph	62	34
1909	Java	ph	63	41
ROCHER, CHICAGO, ILLINOIS				
1875-1880	Emma Dickerman Straight	ph cc	65	08
ROCKHILL, WILLIAM W.				
1907c.	Consul General, Mukden (annotated)	ph	67	04
ROOFS				
n.d.	Chinese Architecture (annotated)	ph	63	22
n.d.	Peking (annotated)	ph	63	39
ROOFTOPS				
n.d.	Hankow and Hanyang (annotated)	ph	62	52
1908	Manchurian Trip	ph	62	44
ROOSEVELT, ALICE L.				
1905-1909	Diplomatic Career Residences (annotated)	alb	50	03
1905c.	U.S. Legation, Seoul (annotated, autographed)	ph	67	02
ROOSEVELT, THEODORE				
1915	Camp of Instruction, Regular	alb	54	01

INDEX

06/11/80

KEYWORDS	TITLE	TYPE	BX	FL
ROOSEVELT, THEODORE	Troops, Plattsburg, New York (annotated)			
RURAL SCENES				
n.d.	Chinese Village Scenes	ph	63	21
n.d.	Rural Scenes	ph	62	14
1904-1905	Russo-Japanese War, China, Korea (annotated)	alb	61	01
1905c.	Chinese Scenes	ph	62	06
1905c.	Chinese Scenes	ph	62	05
1905c.	Rural Scenes	ph	62	15
1905c.	Rural Scenes	ph	62	24
1907c.	Views of China	alb	56	01
1908	Manchurian Trip	ph	62	40
RUSSIA, HABAROVSK				
n.d.	Published Guides and Souvenir Views	ph	74	23
RUSSIA, SIBERIA				
1907-1908	China, Manchuria, Siberia, Korea (annotated by George Marvin)	alb	60	02
1907c.	Siberia	ph	63	08
1907c.	Consul General, Mukden (annotated)	alb	50	01
RUSSIA, VLADIVOSTOK				
1907-1908	China, Manchuria, Siberia, Korea (annotated by George Marvin)	alb	60	02
1907c.	Siberia	ph	63	08
RUSSIAN NAVY				
1904-1905	Russo-Japanese War, China, Korea (annotated)	alb	61	01
1904-1905	Russo-Japanese War, Japan, China, and Korea (annotated)	alb	57	01
1904-1905	Russo-Japanese War (annotated)	alb	58	01
RUSSO-JAPANESE WAR				
n.d.	Military Scenes	ph	62	57
1901-1909	Voyage to China, Chinese Imperial Maritime Customs School, Early Career	alb	59	01
1904-1905	Russo-Japanese War, China, Korea (annotated)	alb	61	01
1904-1905	Russo-Japanese War	ph	62	18
1904-1905	Russo-Japanese War (annotated)	alb	58	01
1904-1905	Russo-Japanese War, Japan, China, and Korea (annotated)	alb	57	01
1904-1905	Russo-Japanese War	alb	58	02
1904-1905	Russo-Japanese War Correspondent	ph	64	18
1904, 1911	Group Portraits (mounted)	ph	75	04
1905c.	Harbin	pcb	74	17
1905c.	Russo-Japanese War	alb	52	01

INDEX

06/11/80

KEYWORDS	TITLE	TYPE	BX	FL
RUSSO-JAPANESE WAR				
1905c.	Russo-Japanese War	neg	71	02
1907-1908	China, Manchuria, Siberia, Korea (annotated by George Marvin)	alb	60	02
S. FUJITA, SEOUL, KOREA				
1904-1905	Japanese Officials in Korea (annotated, autographed)	cc ph	64	19
S. YAMAMOTO, PEKING				
1910c.	Chinese Associates (annotated)	ph	67	07
SANBORN, DOROTHY				
n.d.	Hazel S. Sanborn and Family	ph	66	04
SANBORN, JOAN				
n.d.	Hazel S. Sanborn and Family	ph	66	04
SANBORN, ROBERT S.				
n.d.	Hazel S. Sanborn and Family	ph	66	04
SAVAGE CLUB				
1899-1901	Student Scrapbook	alb	31	04
SCULPTURE				
n.d.	Peking (annotated)	ph	63	39
n.d.	Temples	ph	67	09
n.d.	Temple of Heaven (annotated)	ph	63	02
n.d.	Chinese Architecture	ph	62	10
n.d.	Chinese Architecture (annotated)	ph	63	22
n.d.	Ming Tombs (annotated)	ph	63	13
n.d.	Summer Palace (annotated)	ph	63	11
n.d.	Yellow Temple, Lama Temple (annotated)	ph	63	09
n.d.	Temple of Heaven (annotated)	ph	63	12
n.d.	Photographs of Artwork (commercial photographs)	ph	72	10
1902-1912	China, Cuba, Korea	alb	60	01
1904-1905	Russo-Japanese War, China, Korea (annotated)	alb	61	01
1904-1905	Russo-Japanese War	alb	58	02
1907c.	Mukden (annotated)	ph	62	54
1907c.	Mukden (annotated)	ph	62	48
1909	Westerners in China	neg	71	06
1919-1920	Cemetery Beautification, Suresnes (annotated in French)	ph	22	18
1919-1920	Cemetery Beautification, Suresnes	ph	22	17
SEASCAPES				
n.d.	Macao	ph	62	49
n.d.	Canton (annotated)	ph	62	51
n.d.	Rivers and Ships	ph	62	25
n.d.	Rivers, Docks, and Boats (annotated)	ph	63	25
n.d.	Chinese Boats and Ships (annotated)	ph	62	12
1909	Java Scenes	ph	63	42

INDEX

06/11/80

KEYWORDS	TITLE	TYPE	BX	FL
SEASCAPES				
1913-1916	Narragansett and Westbury	ph	65	14
SEIGEL STUDIO, CHICAGO, ILLINOIS				
1910c.	Straight Family Portraits	ph	66	05
SEOUL FUSAN RAILROAD				
n.d.	Korea (annotated)	ph	63	38
SEVENTEEN-EIGHTEEN (1718) H STR.				
1913c.	Seventeen-Eighteen H Street	ph	65	30
SHAYES, OSWEGO, NEW YORK				
1890-1912	Hazel Henrietta Straight Sanborn	ph cc	66	03
SHIPS				
n.d.	Paintings of Clipper Ships	ph	66	15
n.d.	Maritime Scenes	neg	71	15
n.d.	Chinese Boats and Ships (annotated)	ph	62	12
n.d.	Rivers and Ships	ph	62	25
n.d.	Rivers and Ships	ph	62	26
1901-1909	Voyage to China, Chinese Imperial Maritime Customs School, Early Career	alb	59	01
1904-1905	Russo-Japanese War	alb	58	02
1904-1905	Russo-Japanese War, Japan, China, and Korea (annotated)	alb	57	01
1904-1905	Russo-Japanese War (annotated)	alb	58	01
1904-1905	Russo-Japanese War, China, Korea (annotated)	alb	61	01
1908	Manchurian Trip (annotated)	ph	62	41
1914	En Route to England	ph	65	13
1917c.	Voyage on the Transport "Logan"	neg	71	28
SOCIAL LIFE				
n.d.	Straights and Friends	ph	64	05
1897-1901	Student Scrapbook	alb	32	01
1899-1901	Student Scrapbook	alb	31	04
1902c.	Social Acquaintances	ph	62	04
1905c.	U.S. Legation, Seoul (annotated, autographed)	ph	67	02
1907-1910	Friends (annotated)	ph	65	10
1911-1917	Friends and Relatives	ph	65	33
1912	English Country Parties	ph	65	37
1912-1915	Country Houses and House Parties	alb	55	01
1912c.	Westerners in China (annotated)	ph	64	08
1913-1916	Narragansett and Westbury	ph	65	14
SOUTH CAROLINA				
n.d.	United States Postcards	pcc pcb	73	01
SPIRIT WALK				
n.d.	Temple of Heaven (annotated)	ph	63	12
SPORTS				
1897-1901	Student Scrapbook	alb	32	01
1899-1901	Student Scrapbook	alb	31	04

INDEX

06/11/80

KEYWORDS	TITLE	TYPE	BX	FL
SPORTS				
1907-1910	Friends (annotated)	ph	65	10
1907c.	Polo in China (annotated, sketch)	ph	64	02
STEPHENS, HENRY M.				
1897-1901	Cornell (annotated)	ph	66	07
1913-1918	Family Portraits, Children	ph	66	11
STRAIGHT, BEATRICE W.				
1913-1925	Straight Children	ph	65	17
1915c.	Mrs. Bend and the Children	neg	71	25
1917c.	Straight Family	neg	71	26
1921-1924	Westbury and Woods Hole	ph	65	19
1921-1924	Straight Family	ph	65	18
1921c.	Straight Children	ph	66	12
1922, 1925	Beatrice Whitney Straight, Westbury	ph	65	21
1923-1924	Beatrice Whitney Straight, Woods Hole	ph	65	22
STRAIGHT, DOROTHY LOUISE				
1910c.	Straight Family Portraits	ph	66	05
STRAIGHT, DOROTHY W.				
-n.d.	Photographs of Paintings	ph	65	34
n.d.	Friends	ph	65	11
n.d.	Straights and Friends	ph	64	05
1902-1915	Friends and Associates	alb	53	01
1907-1910	Friends (annotated)	ph	65	10
1909-1911	Straights and Friends	ph	64	01
1909-1912	Willard and Dorothy Straight	ph	65	12
1909-1912	Peking (annotated)	ph	64	21
1909c.	Straights and Friends	ph	64	14
1911	Wedding and Honeymoon	ph	66	10
1911	Friends and Associates	ph	64	10
1911-1917	Friends and Relatives	ph	65	33
1911c.	Dorothy Straight in Sedan Chair	ph	65	35
1911c.	Chinese People	neg	71	16
1911c.	Groups of Westerners	neg	71	21
1911c.	People in China	neg	71	22
1911c.	Western People	neg	71	20
1912	English Country Parties	ph	65	37
1912	Manila (annotated)	ph	63	36
1912c.	English Country Houses	neg	71	24
1912c.	Westerners in China (annotated)	ph	64	08
1912c.	Dorothy Whitney Straight	ph	64	07
1912c.	English Country Parties	ph	65	39
1913-1916	Narragansett and Westbury	ph	65	14
1913-1918	Family Portraits, Children	ph	66	11
1913c.	Seventeen-Eighteen H Street	ph	65	30
1914	En Route to England	ph	65	13
1915c.	Baby Pictures	ph	65	32
1917c.	Straight Family	neg	71	26
STRAIGHT, ELLA MAE				
1910c.	Straight Family Portraits	ph	66	05

INDEX

06/11/80

KEYWORDS	TITLE	TYPE	BX	FL
STRAIGHT, EMMA D.				
n.d.	Willard Straight's Family, Later Prints	ph	66	02
n.d.	Friends of Henry and Emma Straight	ph cc cdv	66	01
n.d.	Tombs of Henry and Emma Straight (annotated)	ph	65	09
1875-1878	Emma Dickerman Straight	ph cc cdv	65	01
1875-1880	Emma Dickerman Straight	ph cc	65	08
STRAIGHT, HAZEL H.				
n.d.	Friends of Henry and Emma Straight	ph cc cdv	66	01
n.d.	Hazel S. Sanborn and Family	ph	66	04
1882-1887	Childhood Portraits of Hazel Straight	ph cc	65	07
1890-1912	Hazel Henrietta Straight Sanborn	ph cc	66	03
STRAIGHT, HENRY H.				
n.d.	Friends of Henry and Emma Straight	ph cc cdv	66	01
n.d.	Willard Straight's Family, Later Prints	ph	66	02
n.d.	Tombs of Henry and Emma Straight (annotated)	ph	65	09
1885c.	Straight Family	ph cdv	65	02
STRAIGHT, MICHAEL W.				
1913-1918	Family Portraits, Children	ph	66	11
1913-1925	Straight Children	ph	65	17
1917c.	Straight Family	neg	71	26
1921-1924	Westbury and Woods Hole	ph	65	19
1921-1924	Straight Family	ph	65	18
1921-1925	Michael Whitney Straight	ph	65	20
1921c.	Straight Children	ph	66	12
1924	Michael Whitney Straight, Woods Hole	ph	65	23
STRAIGHT, ORLANDO W. (MRS.)				
1910c.	Straight Family Portraits	ph	66	05
STRAIGHT, WHITNEY W.				
1913-1918	Family Portraits, Children	ph	66	11
1913-1925	Straight Children	ph	65	17
1915c.	Baby Pictures	ph	65	32
1915c.	Mrs. Bend and the Children	neg	71	25
1917c.	Straight Family	neg	71	26
1921c.	Straight Children	ph	66	12
1925c.	Westbury	ph	65	24
STRAIGHT, WILLARD D.				
n.d.	Photographs of Paintings	ph	65	34
n.d.	Langres	pcb pcc	73	11
n.d.	Friends of Henry and Emma Straight	ph cc cdv	66	01
n.d.	Friends	ph	65	11
n.d.	Straights and Friends	ph	64	05
1880-1897	Childhood Portraits of Willard Straight	ph cdv	65	03

INDEX

06/11/80

KEYWORDS	TITLE	TYPE	BX	FL
STRAIGHT, WILLARD D. 1880-1901	Childhood Portraits of Willard Straight	ph	65	05
1881-1887	Childhood Portraits of Willard Straight	ph cc	65	06
1890-1912	Hazel Henrietta Straight Sanborn	ph cc	66	03
1896-1897	Bordentown Military Institute	ph	65	28
1897-1901	Cornell (annotated)	ph	66	06
1897-1901	Cornell (annotated)	ph	66	07
1897-1901	Student Scrapbook	alb	32	01
1899-1901	Student Scrapbook	alb	31	04
1900-1915	Portraits of Willard Straight	ph	66	08
1901-1909	Voyage to China, Chinese Imperial Maritime Customs School, Early Career	alb	59	01
1901-1915	Willard Straight's Career	alb	53	02
1902	Chinese Imperial Maritime Customs Service	ph	67	01
1902-1912	China, Cuba, Korea	alb	60	01
1902-1915	Friends and Associates	alb	53	01
1904-1905	Russo-Japanese War, Japan, China, and Korea (annotated)	alb	57	01
1904-1905	Russo-Japanese War, China, Korea (annotated)	alb	61	01
1904, 1911	Group Portraits (mounted)	ph	75	04
1905-1909	Diplomatic Career Residences (annotated)	alb	50	03
1905c.	U.S. Legation, Seoul (annotated, autographed)	ph	67	02
1906	Havana (annotated)	ph	67	03
1906-1908	Mukden (annotated, autographed)	ph cc	64	20
1907-1908	China, Manchuria, Siberia, Korea (annotated by George Marvin)	alb	60	02
1907-1910	Friends (annotated)	ph	65	10
1907c.	Siberia	ph	63	08
1907c.	Consul General, Mukden (annotated)	ph	67	04
1907c.	Consul General, Mukden (autographed)	ph	67	05
1907c.	Views of China	alb	56	01
1907c.	Polo in China (annotated, sketch)	ph	64	02
1907c.	Mukden (annotated)	ph	62	48
1908	Gift Enlargements (autographed)	ph	67	08
1909-1911	Portraits of Willard Straight in China (annotated)	ph	64	03
1909-1911	Straights and Friends	ph	64	01
1909-1912	Peking (annotated)	ph	64	21
1909-1912	Willard and Dorothy Straight	ph	65	12
1909c.	Straights and Friends	ph	64	14

INDEX

06/11/80

KEYWORDS	TITLE	TYPE	BX	FL
STRAIGHT, WILLARD D.				
1910c.	Portraits (mounted enlargements)	ph	75	03
1910c.	Peking Photographs (note by George D. Marvin)	alb	51	01
1910c.	Portraits of Friends and Associates (autographed, annotated)	ph	65	29
1911	Friends and Associates	ph	64	10
1911	Willard Straight and Associates (annotated)	ph	64	11
1911	Wedding and Honeymoon	ph	66	10
1911-1917	Friends and Relatives	ph	65	33
1911c.	Groups of Westerners	neg	71	21
1911c.	People in China	neg	71	22
1911c.	Western People	neg	71	20
1911c.	Western Men	neg	71	19
1912	English Country Parties	ph	65	37
1912	Manila (annotated)	ph	63	36
1912c.	English Country Parties	ph	65	39
1912c.	Westerners in China (annotated)	ph	64	08
1913-1916	Narragansett and Westbury	ph	65	14
1913-1917	Portraits of Willard Straight	ph	65	31
1913-1918	Family Portraits, Children	ph	66	11
1913-1925	Straight Children	ph	65	17
1913c.	Seventeen-Eighteen H Street	ph	65	30
1914	En Route to England	ph	65	13
1914-1918	Adult Portraits of Willard Straight	ph	65	04
1915c.	Baby Pictures	ph	65	32
1917c.	Straight Family	neg	71	26
STRAUSS PAYTON				
1910c.	Portraits of Friends and Associates (autographed, annotated)	ph	65	29
STREET PERFORMERS				
1908	Manchurian Trip, Scenes of Chinese Life	ph	62	45
STREET SCENES				
n.d.	Macao	ph	62	49
n.d.	Hankow and Hanyang	ph	62	50
n.d.	Canton (annotated)	ph	62	51
n.d.	Yangtze River (annotated)	ph	62	55
n.d.	Chinese Street Scenes	neg	71	08
n.d.	Views of China	neg	71	17
n.d.	Buildings and Gates	ph	62	22
n.d.	Street Scenes (annotated)	ph	63	17
1901	Voyage to China (annotated)	ph	62	01
1904-1905	Russo-Japanese War, China, Korea (annotated)	alb	61	01
1904-1905	Russo-Japanese War, Japan, China, and Korea (annotated)	alb	57	01
1904c.	Korea	ph	62	21

INDEX

06/11/80

KEYWORDS	TITLE	TYPE	BX	FL
STREET SCENES				
1904c.	Manchurian Scenes	ph	62	19
1905c.	Street Scenes	ph	62	16
1905c.	Street Scenes	ph	62	08
1905c.	Chinese Scenes	ph	62	05
1905c.	Chinese Street Scenes	neg	71	10
1905c.	Chinese Street Scenes	neg	71	09
1907-1908	China, Manchuria, Siberia, Korea (annotated by George Marvin)	alb	60	02
1907c.	Siberia	ph	63	08
1907c.	Views of China	alb	56	01
1908	Manchurian Trip, Scenes of Chinese Life (annotated)	ph	62	46
1908	Manchurian Trip (annotated)	ph	62	36
1908c.	Street Scenes	ph	62	23
1909	Funeral Procession of the Empress Dowager	ph	63	28
1909	Funeral Procession of the Empress Dowager	ph	63	27
1909	Java Scenes	ph	63	42
1910c.	Views of Peking (annotated)	ph	63	03
1912	Peking in Ruins	ph	63	31
1912	Peking in Ruins	ph	63	30
1912	Peking in Ruins	ph	63	33
SU KUNG, PRINCESS				
n.d.	Groups of Women, Chinese and Western	ph	64	09
SUEZ CANAL				
1901-1909	Voyage to China, Chinese Imperial Maritime Customs School, Early Career	alb	59	01
SUMMER PALACE				
n.d.	Summer Palace (annotated)	ph	63	11
n.d.	Scenes of China	ph	63	01
n.d.	Chinese Architecture	ph	62	11
n.d.	Peking (annotated)	ph	63	39
n.d.	Chinese Scenes (mounted enlargements)	ph	75	02
1902-1912	China, Cuba, Korea	alb	60	01
1910c.	Summer Palace	pcc pcb	74	14
SUZUKI, JAPAN				
1880-1897	Childhood Portraits of Willard Straight	ph cdv	65	03
1910c.	Portraits (mounted enlargements)	ph	75	03
SWITZERLAND				
n.d.	Mountain Scenes (commercial photographs)	ph	67	11
SZE-YUEN-MING, SHANGHAI, CHINA				
1910c.	Chinese Officials (annotated, autographed)	cc	64	17
SZE, SAO-KE ALFRED				
1907-1908	China, Manchuria, Siberia,	alb	60	02

INDEX

06/11/80

KEYWORDS	TITLE	TYPE	BX	FL
SZE, SAO-KE ALFRED				
1908c.	Korea (annotated by George Marvin) Chinese Family Portraits (annotated, autographed)	ph	67	06
T'ANG, SHAO-YI				
n.d.	Chinese Friends and Associates	ph	64	15
1907c.	Consul General, Mukden (annotated)	ph	67	04
1908c.	Chinese Family Portraits (annotated, autographed)	ph	67	06
1910c.	Chinese Officials (annotated, autographed)	cc	64	17
1911	Friends and Associates	ph	64	10
TAKEBAYASHI, TOKYO, JAPAN				
1907c.	Chinese Officials (annotated, autographed)	cc	64	13
TAKEYUCH PHOTOGRAPHER, HBAROVSK, RUSSIA				
1906-1908	Mukden (annotated, autographed)	ph cc	64	20
TAO, TIEN-CHUN				
1910c.	Chinese Associates (annotated)	ph	67	07
TARTAR WALL				
1910c.	Views of Feking (annotated)	ph	63	03
TEAHOUSES				
n.d.	Hankow and Hanyang (annotated)	ph	62	52
TEMPLE OF FIVE-HUNDRED GENJII, CANTON				
n.d.	Canton (annotated)	ph	62	51
TEMPLE OF HEAVEN, MUKDEN PALACE				
1907c.	Mukden (annotated)	ph	62	54
1907c.	Mukden (annotated)	ph	62	48
TEMPLE OF HEAVEN, PEKING				
n.d.	Temple of Heaven (annotated)	ph	63	02
n.d.	Temple of Heaven (annotated)	ph	63	12
1902-1912	China, Cuba, Korea	alb	60	01
1907-1908	China, Manchuria, Siberia, Korea (annotated by George Marvin)	alb	60	02
TEMPLES				
n.d.	Temple of Heaven (annotated)	ph	63	12
n.d.	Entrances, Arches, Palaces, Temples (annotated)	ph	63	16
n.d.	Scenes of China	ph	63	01
n.d.	Temple of Heaven (annotated)	ph	63	02
n.d.	Yellow Temple, Lama Temple (annotated)	ph	63	09
n.d.	Canton (annotated)	ph	62	51
n.d.	Temples	ph	67	09
n.d.	Mounted Chinese Scenes	ph	67	10
n.d.	Chinese Buildings	neg	71	07
1901-1909	Voyage to China, Chinese	alb	59	01

INDEX

06/11/80

KEYWORDS	TITLE	TYPE	BX	FL
TEMPLES				
	Imperial Maritime Customs School, Early Career			
1902-1912	China, Cuba, Korea	alb	60	01
1907c.	Charles J. Arnell, U.S. Consulate, Mukden (annotated)	ph	62	27
1910c.	Peking Landmarks	pcc pcb	74	15
TENNIS				
1907-1910	Friends (annotated)	ph	65	10
1913-1916	Narragansett and Westbury	ph	65	14
TO-WEN				
1910c.	Chinese Associates (annotated)	ph	67	07
TOMBS				
n.d.	Tombs of Henry and Emma Straight (annotated)	ph	65	09
n.d.	Ming Tombs (annotated)	ph	63	13
1902-1912	China, Cuba, Korea	alb	60	01
1907-1908	China, Manchuria, Siberia, Korea (annotated by George Marvin)	alb	60	02
1907c.	Mukden (annotated)	ph	62	48
1908	Manchurian Trip	ph	62	28
1908	Gift Enlargements (autographed)	ph	67	08
TOPOGRAPHY				
n.d.	Yangtze River (annotated)	ph	62	56
TOWERS				
n.d.	Chinese Architecture	ph	62	10
TRANS-SIBERIAN RAILROAD				
1902-1910	Railroads	neg	71	11
1907-1908	China, Manchuria, Siberia, Korea (annotated by George Marvin)	alb	60	02
1907c.	Consul General, Mukden (annotated)	alb	50	01
TRANSPORTATION, AIRPLANES				
1925c.	Westbury	ph	65	24
TRANSPORTATION, AUTOMOBILES				
1925c.	Westbury	ph	65	24
TRANSPORTATION, BARGES				
n.d.	Rivers and Ships	ph	62	26
n.d.	Rivers and Ships	ph	62	25
TRANSPORTATION, BATTLESHIPS				
1904-1905	Russo-Japanese War	alb	58	02
1904-1905	Russo-Japanese War, Japan, China, and Korea (annotated)	alb	57	01
TRANSPORTATION, CAMEL CARAVANS				
n.d.	Panoramic Views of China	alb	50	02
n.d.	Transportation (annotated)	ph	63	24
n.d.	Chinese Scenes (mounted enlargements)	ph	75	02
n.d.	Chinese Scenes (mounted enlargements)	ph	75	01

INDEX

06/11/80

KEYWORDS	TITLE	TYPE	BX	FL
TRANSPORTATION, CAMEL CARAVANS				
1904-1905	Russo-Japanese War, China, Korea (annotated)	alb	61	01
1905c.	Rural Scenes	ph	62	15
1907c.	Views of China	alb	56	01
1908	Manchurian Trip, Scenes of Chinese Life (annotated)	ph	62	46
1910c.	Views of Peking (annotated)	ph	63	03
TRANSPORTATION, CARRIAGES				
1907-1908	China, Manchuria, Siberia, Korea (annotated by George Marvin)	alb	60	02
1909-1911	Portraits of Willard Straight in China (annotated)	ph	64	03
TRANSPORTATION, CARRIAGES				
n.d.	Saigon	ph	63	37
n.d.	Chinese Scenes (mounted enlargements)	ph	75	01
TRANSPORTATION, DONKEY CARTS				
n.d.	Chinese Village Scenes	ph	63	21
TRANSPORTATION, DONKEYS				
n.d.	Great Wall	ph	63	15
TRANSPORTATION, FERRIES				
1905c.	Rural Scenes	ph	62	15
1908	Manchurian Trip (annotated)	ph	62	38
TRANSPORTATION, HORSE-DRAWN SLEIGHS				
1907c.	Siberia	ph	63	08
TRANSPORTATION, HORSECARTS				
n.d.	Transportation (annotated)	ph	63	24
n.d.	Chinese Village Scenes	ph	63	21
1905c.	Street Scenes	ph	62	16
1905c.	Rural Scenes	ph	62	24
1905c.	Chinese Scenes	ph	62	06
1907c.	Siberia	ph	63	08
1907c.	Views of China	alb	56	01
1908	Manchurian Trip (annotated)	ph	62	29
1908	Manchurian Trip (annotated)	ph	62	42
1908c.	Street Scenes	ph	62	23
TRANSPORTATION, HORSES				
1905c.	Chinese Scenes	ph	62	06
1908	Manchurian Trip	ph	62	40
1908	Manchurian Trip (annotated)	ph	62	42
1908	Manchurian Trip (annotated)	ph	62	36
1908	Manchurian Trip (annotated)	ph	62	37
1908	Manchurian Trip	ph	62	35
TRANSPORTATION, HOSPITAL SHIPS				
1904-1905	Russo-Japanese War	alb	58	02
1904-1905	Russo-Japanese War (annotated)	alb	58	01
TRANSPORTATION, HOUSEBOATS				
n.d.	Rivers, Docks, and Boats (annotated)	ph	63	25
1908	Manchurian Trip	ph	62	44

INDEX

06/11/80

KEYWORDS	TITLE	TYPE	BX	FL
TRANSPORTATION, JINRIKSHAS				
n.d.	Transportation (annotated)	ph	63	24
n.d.	Saigon	ph	63	37
1880-1901	Childhood Portraits of Willard Straight	ph	65	05
1901	Voyage to China	neg	71	01
TRANSPORTATION, JUNKS				
n.d.	Rivers, Docks, and Boats (annotated)	ph	63	25
n.d.	Macao	ph	62	49
n.d.	Canton (annotated)	ph	62	51
n.d.	Yangtze River (annotated)	ph	62	56
n.d.	Maritime Scenes	neg	71	14
TRANSPORTATION, OXCARTS				
n.d.	Rural Scenes	neg	71	13
1901	Voyage to China (annotated)	ph	62	01
1904-1905	Russo-Japanese War, Japan, China, and Korea (annotated)	alb	57	01
1905c.	Street Scenes	ph	62	08
1908	Manchurian Trip	ph	62	40
TRANSPORTATION, RAFTS				
n.d.	Rivers and Ships	ph	62	26
TRANSPORTATION, RAILROADS				
n.d.	Transportation (annotated)	ph	63	24
n.d.	Great Wall	ph	63	15
n.d.	Korea (annotated)	ph	63	38
1902-1910	Railroads	neg	71	11
1902-1910	Railroads	neg	71	12
1902-1912	China, Cuba, Korea	alb	60	01
1904-1905	Russo-Japanese War, China, Korea (annotated)	alb	61	01
1904-1905	Russo-Japanese War, Japan, China, and Korea (annotated)	alb	57	01
1904-1905	Russo-Japanese War (annotated)	alb	58	01
1904-1905	Russo-Japanese War	alb	58	02
1904c.	Manchurian Scenes	ph	62	19
1905c.	Street Scenes	ph	62	08
1907-1908	China, Manchuria, Siberia, Korea (annotated by George Marvin)	alb	60	02
1907c.	Siberia	ph	63	08
1907c.	Consul General, Mukden (annotated)	alb	50	01
1910c.	Peking Photographs (note by George D. Marvin)	alb	51	01
1912c.	Westerners in China (annotated)	ph	64	08
TRANSPORTATION, ROWBOATS				
n.d.	Chinese River Scenes	ph	63	26
TRANSPORTATION, SAILBOATS				
n.d.	Chinese River Scenes	ph	63	26
n.d.	Rivers, Docks, and Boats (annotated)	ph	63	25

INDEX

06/11/80

KEYWORDS	TITLE	TYPE	BX	FL
TRANSPORTATION, SAILBOATS				
n.d.	Yangtze River (annotated)	ph	62	55
n.d.	Hankow and Hanyang	ph	62	50
n.d.	Hankow and Hanyang (annotated)	ph	62	52
n.d.	Maritime Scenes	neg	71	15
1907c.	Consul General, Mukden (annotated)	alb	50	01
1907c.	Views of China	alb	56	01
TRANSPORTATION, SEDAN CHAIRS				
n.d.	Transportation (annotated)	ph	63	24
1905-1906	Alice Roosevelt Longworth	neg	71	03
1907c.	Views of China	alb	56	01
1909-1911	Straights and Friends	ph	64	01
1909c.	Straights and Friends	ph	64	14
1911c.	Dorothy Straight in Sedan Chair	ph	65	35
TRANSPORTATION, STEAMSHIPS				
n.d.	Maritime Scenes	neg	71	15
n.d.	Rivers and Ships	ph	62	25
n.d.	Rivers and Ships	ph	62	26
n.d.	Canton (annotated)	ph	62	51
n.d.	Rivers, Docks, and Boats (annotated)	ph	63	25
TRANSPORTATION, STREETCARS				
1904-1905	Russo-Japanese War, Japan, China, and Korea (annotated)	alb	57	01
1905c.	Street Scenes	ph	62	08
TREE TRANSPLANTING				
1919-1920	Cemetery Beautification, Suresnes (annotated in French)	ph	22	18
 TSAI HSUN				
1910c.	Chinese Associates (annotated)	ph	67	07
 TSAI HSUN, PRINCESS				
n.d.	Chinese Women (annotated)	ph	64	22
n.d.	Groups of Women, Chinese and Western	ph	64	09
 TSAI TZE				
1904, 1911	Group Portraits (mounted)	ph	75	04
 TSAI TZE, DUCHESS				
n.d.	Chinese Women (annotated)	ph	64	22
n.d.	Chinese Women	ph cc	64	16
n.d.	Groups of Women, Chinese and Western	ph	64	09
 TSAI, T'ING-KAN				
1902-1915	Friends and Associates	alb	53	01
1909-1911	Portraits of Willard Straight in China (annotated)	ph	64	03
1911	Friends and Associates	ph	64	10
1911	Willard Straight and Associates (annotated)	ph	64	11

INDEX

06/11/80

KEYWORDS	TITLE	TYPE	BX	FL
TZ'U HSI				
1901-1909	Voyage to China, Chinese Imperial Maritime Customs School, Early Career	alb	59	01
1909	Funeral Procession of the Empress Dowager	ph	63	27
1909	Funeral Procession of the Empress Dowager	ph	63	28
U.S. ARMY				
1912	Peking in Ruins	ph	63	32
1912	Peking in Ruins (annotated)	ph	63	34
1912	Peking in Ruins	ph	63	35
1914-1918	Adult Portraits of Willard Straight	ph	65	04
1915	Camp of Instruction, Regular Troops, Plattsburg, New York (annotated)	alb	54	01
1915	Camp of Instruction, Regular Troops, Plattsburg, New York	ph	65	36
U.S. CONSULATE, MUKDEN				
1905-1909	Diplomatic Career Residences (annotated)	alb	50	03
1906-1908	Mukden (annotated, autographed)	ph cc	64	20
1907-1908	China, Manchuria, Siberia, Korea (annotated by George Marvin)	alb	60	02
1907c.	Consul General, Mukden (autographed)	ph	67	05
1907c.	Consul General, Mukden (annotated)	ph	67	04
1907c.	Consul General, Mukden (annotated)	alb	50	01
1907c.	Charles J. Arnell, U.S. Consulate, Mukden (annotated)	ph	62	27
1907c.	Mukden (annotated)	ph	62	48
1909-1911	Straights and Friends	ph	64	01
U.S. LEGATION, HAVANA				
1902-1912	China, Cuba, Korea	alb	60	01
1906	Havana (annotated)	ph	67	03
U.S. LEGATION, PEKING				
n.d.	Chinese Women (annotated)	ph	64	22
n.d.	Peking (annotated)	ph	63	39
1905-1909	Diplomatic Career Residences (annotated)	alb	50	03
1909-1911	Straights and Friends	ph	64	01
1909-1911	Peking Friends and Associates	ph	64	04
1909-1911	Portraits of Willard Straight in China (annotated)	ph	64	03
1909c.	U.S. Legation, Peking (annotated)	ph	63	04
1909c.	Straights and Friends	ph	64	14
1910c.	Peking Photographs (note by George D. Marvin)	alb	51	01

INDEX

06/11/80

KEYWORDS	TITLE	TYPE	BX	FL
U.S. LEGATION, SEOUL				
1905-1909	Diplomatic Career Residences (annotated)	alb	50	03
1905c.	U.S. Legation, Seoul (annotated, autographed)	ph	67	02
1907c.	Charles J. Arnell, U.S. Consulate, Mukden (annotated)	ph	62	27
UNDERWOOD & UNDERWOOD, NEW YORK, NEW YORK				
1900-1915	Portraits of Willard Straight	ph	66	08
1911-1917	Friends and Relatives	ph	65	33
1913-1917	Portraits of Willard Straight	ph	65	31
1914-1918	Adult Portraits of Willard Straight	ph	65	04
VENDORS				
n.d.	Great Wall	ph	63	15
1902-1912	China, Cuba, Korea	alb	60	01
1908	Manchurian Trip, Scenes of Chinese Life (annotated)	ph	62	46
1908	Manchurian Trip, Scenes of Chinese Life	ph	62	45
1909	Java Scenes	ph	63	42
1909	Java	ph	63	41
VILLAGE SCENES				
n.d.	Chinese Village Scenes	ph	63	21
n.d.	Rural Scenes	neg	71	13
1905c.	Street Scenes	ph	62	16
1908	Manchurian Trip (annotated)	ph	62	36
1908	Manchurian Trip	ph	62	35
1908	Manchurian Trip (annotated)	ph	62	39
1908	Manchurian Trip (annotated)	ph	62	38
1908	Manchurian Trip	ph	62	34
1908	Manchurian Trip (annotated)	ph	62	31
1908	Manchurian Trip (annotated)	ph	62	33
1912	Manila (annotated)	ph	63	36
VIRGINIA				
n.d.	United States Postcards	pcc pcb	73	01
VIZZAVONA, PARIS, FRANCE				
1919-1920	Cemetery Beautification, Suresnes (annotated in French)	ph	22	18
1919-1920	Cemetery Beautification, Suresnes	ph	22	17
VON KETTELER ARCH, PEKING				
1901-1909	Voyage to China, Chinese Imperial Maritime Customs School, Early Career	alb	59	01
1904-1905	Russo-Japanese War, China, Korea (annotated)	alb	61	01
VON KETTELER ARCH, PEKING, CONSTRUCTION				
1901-1902	Early Career	ph	62	17
VON KETTELER ARCH, PEKING, DEDICATION				
1901-1902	Early Career	ph	62	17
WALLS				
1908	Manchurian Trip (annotated)	ph	62	38

INDEX

06/11/80

KEYWORDS	TITLE	TYPE	BX	FL
WALLS				
1910c.	Peking Photographs (note by George D. Marvin)	alb	51	01
1910c.	Views of Peking (annotated)	ph	63	03
WASHINGTON, D.C.				
1913c.	Seventeen-Eighteen H Street	ph	65	30
WEDDINGS				
1911-1917	Friends and Relatives	ph	65	33
WENDELL, BARRET				
1904-1905	Russo-Japanese War, Japan, China, and Korea (annotated)	alb	57	01
WILLIAM J. FALLON, WOODHAVEN, NEW YORK				
1915	Camp of Instruction, Regular Troops, Plattsburg, New York (annotated)	alb	54	01
WILLIAMS, ANNA L.B.				
n.d.	Friends of Henry and Emma Straight	ph cc cdv	66	01
WINTER PALACE				
n.d.	Winter Palace (annotated)	ph	63	10
1910c.	Peking Landmarks	pcc pcb	74	15
WINTER SCENES				
n.d.	Straights and Friends	ph	64	05
1907-1908	China, Manchuria, Siberia, Korea (annotated by George Marvin)	alb	60	02
1907c.	Siberia	ph	63	08
1912c.	Westerners in China (annotated)	ph	64	08
WOLVEN STUDIO, POUGHKEEPSIE, NEW YORK				
1890-1912	Hazel Henrietta Straight Sanborn	ph cc	66	03
WOMEN				
n.d.	Chinese Friends and Associates	ph	64	15
n.d.	Chinese Women (annotated)	ph	64	22
n.d.	Chinese Women	ph cc	64	16
n.d.	Groups of Women, Chinese and Western	ph	64	09
n.d.	People (annotated)	ph	63	20
n.d.	Chinese Scenes (annotated)	ph	63	19
1904-1905	Russo-Japanese War, Japan, China, and Korea (annotated)	alb	57	01
1905c.	Chinese Street Scenes	neg	71	09
1910c.	Portraits (mounted enlargements)	ph	75	03
1911c.	Western People	neg	71	20
1911c.	Chinese People	neg	71	16
1912c.	English Country Parties	ph	65	39
WORLD WAR I				
1914-1918	World War I	pcb	73	13
1914-1918	World War I in Lorraine	pcb	73	14
1914-1918	Adult Portraits of Willard Straight	ph	65	04

INDEX

06/11/80

KEYWORDS	TITLE	TYPE	BX	FL
WORLD WAR I				
1915	Camp of Instruction, Regular Troops, Plattsburg, New York	ph	65	36
1915	Camp of Instruction, Regular Troops, Plattsburg, New York (annotated)	alb	54	01
1919	American Cemetery, Suresnes	ph neg	22	14
1919-1920	Cemetery Beautification, Suresnes	ph	22	17
1919-1920	Cemetery Beautification, Suresnes (annotated in French)	ph	22	18
YALU RIVER				
1907-1908	China, Manchuria, Siberia, Korea (annotated by George Marvin)	alb	60	02
YANGTZE RIVER				
n.d.	Rivers, Docks, and Boats (annotated)	ph	63	25
n.d.	Yangtze River (annotated)	ph	62	56
n.d.	Yangtze River (annotated)	ph	62	55
n.d.	Hankow and Hanyang	ph	62	50
n.d.	Hankow and Hanyang (annotated)	ph	62	52
n.d.	China Scenes (annotated)	pcb	74	22
YELLOW TEMPLE				
n.d.	Yellow Temple, Lama Temple (annotated)	ph	63	09
YELLOWSTONE NATL. PARK				
n.d.	United States Postcards	pcc pcb	73	01
YOONG KWONG, PHOTOGRAPHER				
1902	Chinese Imperial Maritime Customs Service	ph	67	01
YU SANG, PRINCESS				
n.d.	Chinese Women (annotated)	ph	64	22
n.d.	Groups of Women, Chinese and Western	ph	64	09
YUAN CHIN				
n.d.	Chinese Friends and Associates	ph	64	15
1911	Willard Straight and Associates (annotated)	ph	64	11

INDEX

06/11/80

BX	FL	QTY		NEG	DPL	SIZE
22	14	30	i	01	10	9x12
	American Cemetery, Suresnes					
22	17	06	i	00	00	8x10
	Cemetery Beautification, Suresnes					
22	18	19	i	00	00	10x14
	Cemetery Beautification, Suresnes (annotated in French)					
31	04	42	p	00	00	
	Student Scrapbook					
32	01	82	p	00	00	
	Student Scrapbook					
50	01	12	p	11 (70-01)	00	
	Consul General, Mukden					

	(annotated)				
50	02				
	Panoramic Views of China	09	p	00	00
50	03				
	Diplomatic Career	19	p	00	00
	Residences (annotated)				
51	01				
	Peking Photographs (note by George D. Marvin)	26	p	00	00
52	01				
	Russo-Japanese War	06	p	07 (70-02)	00
53	01				
	Friends and Associates	26	p	31 (70-03,04,05)	00
53	02				
	Willard Straight's Career	29	p	25 (70-05,06)	00
54	01				
	Camp of Instruction, Regular Troops, Plattsburg, New York (annotated)	57	p	00	00
55	01				
	Country Houses and House Parties	26	p	26 (70-07,08)	00
56	01				
	Views of China	32	p	14 (70-09)	00
57	01				

		INDEX			06/11/80	
BX	FL	QTY		NEG	DPL	SIZE
60	01					
	China, Cuba, Korea	49	p	11 (70-24)	00	
60	02					
	China, Manchuria, Siberia, Korea (annotated by George Marvin)	58	p	20 (70-25)	00	
61	01					
	Russo-Japanese War, China, Korea (annotated)	89	p	86 (70-26 - 30)	01	
62	01					
	Voyage to China (annotated)	08	i	08 (68-01)	00	4x5
62	02					
	Peking Social Acquaintances (annotated)	09	i	09 (68-02)	00	4x5
62	03					
	Portraits	03	i	03 (68-03)	00	4x5
62	04					
	Social Acquaintances	14	i	14 (68-04)	01	4x5
62	05					
	Chinese Scenes	04	i	04 (68-05)	00	4x5
62	06					
	Chinese Scenes	21	i	21 (68-06)	01	4x5
62	07					
	Russo-Japanese War Correspondents (annotated)	08	i	08 (68-07)	01	4x5
62	08					
	Street Scenes	18	i	18 (68-08)	00	4x5
62	09					
	Chinese Cathedral	06	i	06 (68-09)	00	4x5
62	10					
	Chinese Architecture	18	i	18 (68-10)	00	4x5
62	11					
	Chinese Architecture	18	i	18 (68-11)	00	4x5
62	12					
	Chinese Boats and Ships (annotated)	07	i	06 (68-12)	00	4x5
62	13					
	Bridges, Gates, Arches	10	i	10 (68-13)	00	4x5
62	14					
	Rural Scenes	14	i	14 (68-14)	03	4x5
62	15					
	Rural Scenes	12	i	12 (68-15)	02	4x5
62	16					
	Street Scenes	12	i	12 (68-16)	01	4x5
62	17					
	Early Career	07	i	07 (68-17)	00	4x5
62	18					
	Russo-Japanese War	05	i	04 (68-18)	00	5x7
62	19					
	Manchurian Scenes	08	i	08 (68-19)	01	5x7
62	20					
	Chinese Scenes	04	i	04 (68-20)	02	5x7

INDEX

06/11/80

BX	FL	QTY		NEG		DPL	SIZE
62	21						
	Korea	07	i	07 (68-21)		00	5x7
62	22						
	Buildings and Gates	17	i	17 (68-22)		07	5x7
62	23						
	Street Scenes	14	i	14 (68-23)		04	5x7
62	24						
	Rural Scenes	09	i	09 (68-24)		01	5x7
62	25						
	Rivers and Ships	14	i	14 (68-25)		01	5x7
62	26						
	Rivers and Ships	12	i	12 (68-26)		00	5x7
62	27						
	Charles J. Arnell, U.S. Consulate, Mukden (annotated)	06	i	06 (68-27)		00	5x7
62	28						
	Manchurian Trip	07	i	06 (68-28)		01	5x7
62	29						
	Manchurian Trip (annotated)	06	i	06 (68-29)		02	5x7
62	30						
	Manchurian Trip (annotated)	06	i	06 (68-30)		04	5x7
62	31						
	Manchurian Trip (annotated)	07	i	07 (69-01)		02	5x7
62	32						
	Manchurian Trip (annotated)	05	i	05 (69-02)		04	5x7
62	33						
	Manchurian Trip (annotated)	05	i	04 (69-03)		03	5x7
62	34						
	Manchurian Trip	10	i	10 (69-04)		04	5x7
62	35						
	Manchurian Trip	10	i	10 (69-05)		06	5x7
62	36						
	Manchurian Trip (annotated)	10	i	08 (69-06)		06	5x7
62	37						
	Manchurian Trip (annotated)	09	i	09 (69-07)		04	5x7
62	38						
	Manchurian Trip (annotated)	09	i	09 (68-08)		07	5x7
62	39						
	Manchurian Trip (annotated)	10	i	09 (69-09)		08	5x7
62	40						
	Manchurian Trip	10	i	10 (69-10)		08	5x7
62	41						
	Manchurian Trip (annotated)	11	i	11 (69-11)		07	5x7

INDEX

06/11/80

BX	FL	QTY		NEG		DPL	SIZE
62	42	13	i	12	(69-12)	06	5x7
	Manchurian Trip (annotated)						
62	43	04	i	00		04	5x7
	Manchurian Trip						
62	44	06	i	00		02	5x7
	Manchurian Trip						
62	45	07	i	00		01	5x7
	Manchurian Trip, Scenes of Chinese Life						
62	46	06	i	00		00	5x7
	Manchurian Trip, Scenes of Chinese Life (annotated)						
62	47	06	i	00		00	5x7
	Manchuria						
62	48	17	i	01	(69-13)	06	5x7
	Mukden (annotated)						
62	49	16	i	16	(69-14)	03	5x7
	Macao						
62	50	12	i	10	(69-15)	05	5x7
	Hankow and Hanyang						
62	51	19	i	16	(69-16)	05	5x7
	Canton (annotated)						
62	52	15	i	00		00	4x5
	Hankow and Hanyang (annotated)						
62	53	09	i	00		02	4x5
	Canton (annotated)						
62	54	13	i	00		04	4x5
	Mukden (annotated)						
62	55	13	i	00		03	4x5
	Yangtze River (annotated)						
62	56	12	i	00		00	4x5
	Yangtze River (annotated)						
62	57	08	i	01	(69-17)	01	4x5
	Military Scenes						
62	58	03	i	00		00	4x5
	Group Portraits						
63	01	11	i	00		00	4x5
	Scenes of China						
63	02	13	i	00		02	4x5
	Temple of Heaven (annotated)						
63	03	13	i	00		09	4x5
	Views of Peking (annotated)						
63	04	12	i	00		11	4x5
	U.S. Legation, Peking (annotated)						
63	05	11	i	00		00	4x5
	Peking Home, Construction						
63	06	09	i	00		00	4x5
	Peking Home, Construction						

INDEX

06/11/80

BX	FL	QTY		NEG	DPL	SIZE
63	07					
	Peking Home	16	i	00	03	4x5
63	08					
	Siberia	15	i	00	00	5x7
63	09					
	Yellow Temple, Lama Temple (annotated)	07	i	04 (69-18)	07	5x7
63	10					
	Winter Palace (annotated)	13	i	00	02	5x7
63	11					
	Summer Palace (annotated)	17	i	00	01	5x7
63	12					
	Temple of Heaven (annotated)	18	i	02 (69-19)	11	5x7
63	13					
	Ming Tombs (annotated)	10	i	00	06	5x7
63	14					
	Great Wall	12	i	07 (69-20)	04	5x7
63	15					
	Great Wall	11	i	06 (69-21)	02	5x7
63	16					
	Entrances, Arches, Palaces, Temples (annotated)	12	i	05 (69-22)	04	5x7
63	17					
	Street Scenes (annotated)	09	i	02 (69-23)	03	5x7
63	18					
	Chinese Views	06	i	01 (69-24)	00	5x7
63	19					
	Chinese Scenes (annotated)	09	i	00	02	5x7
63	20					
	People (annotated)	11	i	03 (69-25)	03	5x7
63	21					
	Chinese Village Scenes	05	i	01 (69-26)	01	5x7
63	22					
	Chinese Architecture (annotated)	12	i	00	07	5x7
63	23					
	Chinese Architecture	08	i	08 (69-27)	01	5x7
63	24					
	Transportation (annotated)	14	i	02 (69-28)	06	5x7
63	25					
	Rivers, Docks, and Boats (annotated)	16	i	13 (69-29)	09	5x7
63	26					
	Chinese River Scenes	05	i	00	00	5x7
63	27					
	Funeral Procession of the Empress Dowager	15	i	00	02	5x7
63	28					
	Funeral Procession of the Empress Dowager	13	i	00	02	5x7

INDEX

06/11/80

BX	FL	QTY		NEG	DPL	SIZE
63	29					
	Peking Home (annotated)	09	i	05 (69-30)	03	5x7
63	30					
	Peking in Ruins	15	i	05 (69-31)	04	5x7
63	31					
	Peking in Ruins	13	i	12 (69-32)	06	5x7
63	32					
	Peking in Ruins	11	i	02 (69-33)	01	5x7
63	33					
	Peking in Ruins	08	i	02 (69-34)	01	5x7
63	34					
	Peking in Ruins (annotated)	09	i	03 (69-35)	05	5x7
63	35					
	Peking in Ruins	09	i	07 (69-36)	03	5x7
63	36					
	Manila (annotated)	18	i	15 (69-37)	03	5x7
63	37					
	Saigon	04	i	00	00	5x7
63	38					
	Korea (annotated)	18	i	00	00	8x10
63	39					
	Peking (annotated)	17	i	00	00	8x10
63	40					
	Peking Home (annotated)	05	i	00	00	8x10
63	41					
	Java	17	i	00	00	8x10
63	42					
	Java Scenes	13	i	00	04	8x10
64	01					
	Straights and Friends	13	i	00	05	4x5
64	02					
	Polo in China (annotated, sketch)	11	i	00	01	5x7
64	03					
	Portraits of Willard Straight in China (annotated)	04	i	00	01	5x7
64	04					
	Peking Friends and Associates	12	i	05 (69-38)	05	5x7
64	05					
	Straights and Friends	11	i	09 (69-39)	09	5x7
64	06					
	Peking Friends and Associates (annotated)	13	i	06 (69-40)	06	5x7
64	07					
	Dorothy Whitney Straight	08	i	00	02	5x7
64	08					
	Westerners in China (annotated)	15	i	01 (69-41)	01	5x7
64	09					
	Groups of Women, Chinese and Western	11	i	11 (69-42)	09	5x7

INDEX

06/11/80

BX	FL	QTY		NEG		DPL	SIZE
64	10						
	Friends and Associates	12	i	08 (69-43)		05	5x7
64	11						
	Willard Straight and Associates (annotated)	09	i	05 (69-44)		05	5x7
64	12						
	Portraits (annotated)	02	i	00		00	5x7
64	13						
	Chinese Officials (annotated, autographed)	05	i	00		00	5x7
64	14						
	Straights and Friends	09	i	06 (69-45)		00	5x7
64	15						
	Chinese Friends and Associates	13	i	11 (69-46)		11	5x7
64	16						
	Chinese Women	07	i	01 (62-59)		00	5x7
64	17						
	Chinese Officials (annotated, autographed)	05	i	00		01	5x7
64	18						
	Russo-Japanese War Correspondent	08	i	00		00	8x10
64	19						
	Japanese Officials in Korea (annotated, autographed)	07	i	00		00	8x10
64	20						
	Mukden (annotated, autographed)	06	i	00		03	8x10
64	21						
	Peking (annotated)	05	i	01 (69-47)		04	8x10
64	22						
	Chinese Women (annotated)	12	i	01 (62-59)		06	8x10
65	01						
	Emma Dickerman Straight	04	i	00		00	4x5
65	02						
	Straight Family	05	i	00		01	4x5
65	03						
	Childhood Portraits of Willard Straight	07	i	00		01	4x5
65	04						
	Adult Portraits of Willard Straight	06	i	00		02	4x5
65	05						
	Childhood Portraits of Willard Straight	06	i	00		00	5x7
65	06						
	Childhood Portraits of Willard Straight	04	i	00		01	5x7
65	07						
	Childhood Portraits of Hazel Straight	05	i	00		00	5x7

INDEX

06/11/80

BX	FL	QTY		NEG		DPL	SIZE
65	08						
	Emma Dickerman Straight	05	i	00		00	5x7
65	09						
	Tombs of Henry and Emma Straight (annotated)	02	i	00		00	5x7
65	10						
	Friends (annotated)	11	i	00		01	5x7
65	11						
	Friends	05	i	00		00	5x7
65	12						
	Willard and Dorothy Straight	04	i	00		03	5x7
65	13						
	En Route to England	07	i	06	(69-48)	06	5x7
65	14						
	Narragansett and Westbury	12	i	00		04	5x7
65	15						
	World War I (annotated)	06	i	00		03	5x7
65	16						
	Displays of Artwork by Willard Straight	12	i	00		00	5x7
65	17						
	Straight Children	08	i	00		00	5x7
65	18						
	Straight Family	09	i	00		02	5x7
65	19						
	Westbury and Woods Hole	12	i	00		00	5x7
65	20						
	Michael Whitney Straight	11	i	00		00	5x7
65	21						
	Beatrice Whitney Straight, Westbury	08	i	00		00	5x7
65	22						
	Beatrice Whitney Straight, Woods Hole	07	i	00		01	5x7
65	23						
	Michael Whitney Straight, Woods Hole	08	i	00		00	5x7
65	24						
	Westbury	12	i	00		01	5x7
65	25						
	Raquette Lake	06	i	00		01	5x7
65	26						
	Pictures of Europe	13	i	00		01	5x7
65	27						
	Great-grandmother Beard (genealogical annotation)	02	i	00		00	12x14
65	28						
	Bordentown Military Institute	03	i	00		00	12x14
65	29						
	Portraits of Friends and Associates (autographed, annotated)	05	i	00		00	12x14

INDEX

06/11/80

BX	FL	QTY		NEG	DPL	SIZE
65	30					
	Seventeen-Eighteen H Street	04	i	00	03	12x14
65	31					
	Portraits of Willard Straight	07	i	01 (62-59)	06	12x14
65	32					
	Baby Pictures	03	i	00	01	12x14
65	33					
	Friends and Relatives	05	i	00	01	12x14
65	34					
	Photographs of Paintings	05	i	00	00	12x14
65	35					
	Dorothy Straight in Sedan Chair	01	i	00	00	12x14
65	36					
	Camp of Instruction, Regular Troops, Plattsburg, New York	10	i	10 (69-49)	00	4x5
65	37					
	English Country Parties	08	i	08 (69-50)	03	5x7
65	38					
	English Country Houses	10	i	11 (69-51)	01	5x7
65	39					
	English Country Parties	10	i	11 (69-52)	00	5x7
66	01					
	Friends of Henry and Emma Straight	07	i	00	00	8x10
66	02					
	Willard Straight's Family, Later Prints	03	i	00	01	8x10
66	03					
	Hazel Henrietta Straight Sanborn	04	i	00	00	8x10
66	04					
	Hazel S. Sanborn and Family	05	i	00	00	8x10
66	05					
	Straight Family Portraits	04	i	00	00	8x10
66	06					
	Cornell (annotated)	03	i	00	00	8x10
66	07					
	Cornell (annotated)	03	i	00	01	8x10
66	08					
	Portraits of Willard Straight	07	i	00	03	8x10
66	09					
	Associates (autographed, annotated)	09	i	00	00	8x10
66	10					
	Wedding and Honeymoon	07	i	00	01	8x10
66	11					
	Family Portraits, Children	06	i	00	02	8x10

INDEX

06/11/80

BX	FL	QTY		NEG	DPL	SIZE
66	12					
	Straight Children	07	i	00	00	8x10
66	13					
	Westbury (annotated)	02	i	00	00	8x10
66	14					
	India House	05	i	00	00	8x10
66	15					
	Paintings of Clipper Ships	10	i	00	00	8x10
67	01					
	Chinese Imperial Maritime Customs Service	05	i	00	00	12x14
67	02					
	U.S. Legation, Seoul (annotated, autographed)	05	i	00	00	12x14
67	03					
	Havana (annotated)	04	i	00	00	12x14
67	04					
	Consul General, Mukden (annotated)	05	i	00	01	12x14
67	05					
	Consul General, Mukden (autographed)	04	i	00	01	12x14
67	06					
	Chinese Family Portraits (annotated, autographed)	03	i	02 (62-59)	00	12x14
67	07					
	Chinese Associates (annotated)	07	i	01 (62-59)	00	12x14
67	08					
	Gift Enlargements (autographed)	02	i	01 (69-06)	00	12x14
67	09					
	Temples	02	i	00	00	12x14
67	10					
	Mounted Chinese Scenes	05	i	00	00	12x14
67	11					
	Mountain Scenes (commercial photographs)	05	i	00	00	12x14
67	12					
	Views of India (ccmmercial photographs)	08	i	00	00	12x14
71	01					
	Voyage to China	00		04	00	4x5
71	02					
	Russo-Japanese War	00		06	00	5x7
71	03					
	Alice Roosevelt Lcngworth	00		14	00	5x7
71	04					
	Mukden	00		05	00	5x7
71	05					
	Great Wall	00		03	00	5x7
71	06					
	Westerners in China	00		03	00	5x7

INDEX

06/11/80

BX	FL	QTY	NEG	DPL	SIZE
71	07				
	Chinese Buildings	00	11	00	5x7
71	08				
	Chinese Street Scenes	00	12	00	5x7
71	09				
	Chinese Street Scenes	00	14	00	5x7
71	10				
	Chinese Street Scenes	00	12	00	5x7
71	11				
	Railroads	00	15	00	5x7
71	12				
	Railroads	00	15	00	5x7
71	13				
	Rural Scenes	00	08	00	5x7
71	14				
	Maritime Scenes	00	03	00	5x7
71	15				
	Maritime Scenes	00	11	00	5x7
71	16				
	Chinese People	00	17	00	5x7
71	17				
	Views of China	00	17	00	5x7
71	18				
	Scenes	00	10	00	4x5
71	19				
	Western Men	00	08	00	5x7
71	20				
	Western People	00	09	00	5x7
71	21				
	Groups of Westerners	00	15	00	5x7
71	22				
	People in China	00	14	00	5x7
71	23				
	Manila	00	11	00	5x7
71	24				
	English Country Houses	00	06	00	5x7
71	25				
	Mrs. Bend and the Children	00	04	00	5x7
71	26				
	Straight Family	00	07	00	5x7
71	27				
	Plattsburg	00	04	00	4x5
71	28				
	Voyage on the Transport "Logan"	00	02	00	5x7
71	29				
	Westbury	00	05	00	5x7
72	01				
	Views of Mexico (commercial photographs)	30	i 00	00	8x10
72	02				
	Views of Mexico (commercial photographs)	30	i 00	00	8x10

INDEX

06/11/80

BX	FL	QTY		NEG	DPL	SIZE
72	03					
	Views of Mexico (commercial photographs)	30	i	00	00	8x10
72	04					
	Views of Mexico (commercial photographs)	23	i	00	00	8x10
72	05					
	Nichols House, Samuel McIntire architect, 1782 (commercial photographs)	07	i	00	00	8x10
72	06					
	Massachusetts Architecture (commercial photographs)	23	i	00	00	8x10
72	07					
	French Architecture (commercial photographs)	37	i	00	00	8x10
72	08					
	German and English Architecture (commercial photographs)	11	i	00	00	8x10
72	09					
	Italian Architecture (commercial photographs)	19	i	00	00	8x10
72	10					
	Photographs of Artwork (commercial photographs)	09	i	00	00	8x10
72	11					
	Scenes of China and Korea (commercial photographs)	30	i	00	00	8x10
72	12					
	Scenes of India (commercial photographs)	19	i	00	00	8x10
72	13					
	Java - Euitenzorg Botanical Gardens (commercial photographs)	10	i	00	00	8x10
72	14					
	Java People (commercial photographs)	09	i	00	00	8x10
72	15					
	Java Scenes (commercial photographs)	07	i	00	00	8x10
72	16					
	Java People (commercial photographs)	16	i	00	00	5x7
73	01					
	United States Postcards	18	i	00	01	5x7
73	02					
	Canadian Postcards	02	i	00	00	5x7
73	03					
	Mexican and Brazilian Postcards (annotated)	08	i	00	00	5x7
73	04					
	British Postcards	14	i	00	00	5x7

INDEX

06/11/80

BX	FL	QTY		NEG	DPL	SIZE
73	05					
	British Museum Indian Art	15	i	00	00	5x7
73	06					
	Norwegian Postcards	04	i	00	00	5x7
73	07					
	Italian Postcards	05	i	00	00	5x7
73	08					
	French Postcards	14	i	00	00	5x7
73	09					
	Old Langres	14	i	00	00	5x7
73	10					
	Old Langres	15	i	00	00	5x7
73	11					
	Langres	18	i	00	03	5x7
73	12					
	Langres	12	i	00	00	5x7
73	13					
	World War I	15	i	00	00	5x7
73	14					
	World War I in Lorraine	17	i	00	00	5x7
73	15					
	Luneville before World War I	15	i	00	00	5x7
73	16					
	Luneville before World War I	13	i	00	01	5x7
73	17					
	Nancy	18	i	00	00	5x7
73	18					
	Java and Johor	21	i	00	00	5x7
73	19					
	People of Java	14	i	00	01	5x7
73	20					
	People of Java	11	i	00	02	5x7
73	21					
	Published Guides and Souvenir Views	06	i	00	00	8x10
74	01					
	Japanese People	07	i	00	00	5x7
74	02					
	Japanese Art	14	i	00	00	5x7
74	03					
	Japanese Scenes	19	i	00	00	5x7
74	04					
	Japanese Scenes	13	i	00	03	5x7
74	05					
	Japanese Scenes	13	i	00	00	5x7
74	06					
	Korean Scenes	10	i	00	00	5x7
74	07					
	Korean Scenes	10	i	00	00	5x7
74	08					
	Korean Scenes	09	i	00	00	5x7

INDEX

06/11/80

BX	FL	QTY		NEG	DPL	SIZE
74	09					
	Korean Women and Village Scenes	18	i	00	02	5x7
74	10					
	Korean Occupations	17	i	00	04	5x7
74	11					
	Portraits of Korean People	12	i	00	02	5x7
74	12					
	Portraits of Korean People	12	i	00	03	5x7
74	13					
	Chinese Revolution	11	i	00	01	5x7
74	14					
	Summer Palace	10	i	00	01	5x7
74	15					
	Peking Landmarks	16	i	00	00	5x7
74	16					
	Transportation, Peking (annotated)	07	i	00	00	5x7
74	17					
	Harbin	08	i	00	00	5x7
74	18					
	Canton	13	i	00	00	5x7
74	19					
	Hong Kong, Macao	16	i	00	04	5x7
74	20					
	Chinese People and Scenes (annotated)	10	i	00	00	5x7
74	21					
	Ming Tombs	06	i	00	00	5x7
74	22					
	China Scenes (annotated)	20	i	00	02	5x7
74	23					
	Published Guides and Souvenir Views	03	i	00	00	5x7
75	01					
	Chinese Scenes (mounted enlargements)	06	i	00	00	16x20
75	02					
	Chinese Scenes (mounted enlargements)	03	i	00	00	16x20
75	03					
	Portraits (mounted enlargements)	04	i	00	00	16x20
75	04					
	Group Portraits (mounted)	02	i	00	00	16x20

 TOSS
 RETURN

Box 88

Willard Straight sketches from Willard Straight Hall

<u>Description</u>	<u>Croly biography</u>
1 Professor Morse Stephens	p. 45
2 Priest "waiting for the angel" (emperor?) (reversed) February 13, 1903	p. 67 ?
3 Manchu woman	p. 70
4 River coolie ("Lung Wang Tan August 16, 1903")	p. 76
5 Chinese temple	p. 78
6 Pekingese in winter clothes	p. 83
7 Chinese coolie "The Cheerful Liar"	p. 91
8 Buddhist Acolyte "Waiting for the Emperor June 21, 1903"	p. 100
9 Buddhist lama	p. 105
10 Tien Lama Feb 15, 1904	p. 115
11 Sketch of Korean	p. 159
12 "Tea at five (?) in the morning Llama Temple 21 June '03"	not in Croly
13 "Mongol [?] Turig Kov (?) Jan 11, 1904"	not in Croly
14 "Tien Llama Feb 15, 1904"	not in Croly
15 Chinese man without shirt	not in Croly
16 Chinese boy - preliminary sketch	not in Croly
17- Caricatures	
18	not in Croly
19 Chinese boy (given to William Delano)	not in Croly